

Pearl Lam Galleries to Open at Gillman Barracks

by Zoe LI 15/01/14 6:52 PM EST

Like 12

Share 3

g+1 2

Share



Hong Kong-born collector, gallerist, and cultural catalyst, Pearl Lam is gearing up for another milestone in her mission to promote international artistic exchange. The third Pearl Lam Gallery will launch on January 17 at art hub Gillman Barracks.

“This is an exciting time for the arts in Singapore. This is an opportunity to establish ourselves near the beginning of an artistic Renaissance in the region. Singapore is developing into one of Asia’s major art hubs with the success of Art Stage Singapore and the government’s efforts to promote artistic and cultural growth by investing funds into the city’s infrastructure devoted to the arts. The Gillman Barracks, the historic building where the new gallery is situated, is an example of a newly developed site for creativity,” says Lam.

The purple-haired patron first started exhibiting Chinese contemporary art in Hong Kong as early as 1993. Finding the audience unresponsive at the time, Lam decided to move north to Shanghai, opening her first gallery there, eventually bringing on Magnus Renfrew to run the space (he would go on to establish the Hong Kong International Art Fair). By 2004, she had organised an acclaimed exhibition “Awakening: La France Mandarine,” featuring French influence in Chinese art.

Lam continues to explore that nebulous

Cadogan Tate Fine Art
 Transport & Storage

[Request a quote](#)

New York | Los Angeles | London | Paris | South of France

territory where the East meets the West in all her gallery shows today. She gives international exposure to contemporary Chinese artists, but places equal emphasis on bringing big names from abroad to Asia. Lam's Hong Kong gallery, opened in May 2011, recently showed Jenny Holzer's LED texts produced in Chinese characters, as well as a [Yinka Shonibare](#) installation directly inspired by Hong Kong. In between, we saw abstract paintings by Zhu Jinshi, and a rare group showing of Hong Kong artists' works from the 1990s.

Singapore will inject a new element to Lam's stable: Southeast Asian artists. "We will focus on local artists and also bring artists new to the region from China and abroad. We want to encourage dialogue with the Singapore people about contemporary culture and provide a meeting place for artists from around the world to engage," says Lam.

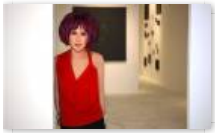
The new space will be inaugurated with an exhibition curated by Philip Dodd titled "Where does it begin? Contemporary Abstract Art in Asia and the West" with works by Indonesia's Christine Ay Tjoe, side-by-side with abstracts by Pat Steir and young British artist Peter Peri, as well as Chinese artists Zhu Jinshi and Su Xiaobai. These names will also be presented at Art Stage Singapore, with the exception of Ay Tjoe, along with Golnaz Fathi, Jim Lambie, Jason Martin, and Michael Chow, aka Zhou Yinghua, a restaurateur-turned-artist whose work is being rediscovered by Lam.

Like 12 Pin it Share 3 g+1 2 Share

TAGS [Contemporary Arts](#) [News](#) [Galleries](#) [Visual Arts](#) [Pearl Lam](#) [Gillman Barracks](#) [Zoe Li](#)

Type Your Email Here

RECOMMENDED



INTERVIEW: Pearl Lam on Western Colonization

BLOUIN DAILY NEWSPAPERS ART FAIR EDITIONS The Ultimate Resource for Event Coverage SEE WHAT YOU MISSED