



BEN QUILTY

STRAIGHT WHITE MALE

本·奎爾蒂：白人直男

BEN QUILTY
STRAIGHT WHITE MALE
本·奎爾蒂：白人直男



Cover 封面: Andre at Jim Morrison's Grave (detail) 在吉姆·莫里森墓旁的安德烈 (局部), 2014, Oil on linen 亞麻布面油畫, 202 x 265 cm (79 1/2 x 104 3/8 in.)
This page 本頁: Painting for a rug about my Dad (detail) 有關父親的地毯的繪畫 (局部), 2014, Oil on linen 亞麻布面油畫, 160 x 170 cm (63 x 67 in.)

Straight White Male:

Ben Quilty

白人直男: 本奎蒂

I am a straight white male from a country where the paradigm human position is straight and white and male. I aim to interrogate this paradigm and the flawed nature of new masculinities after the feminist movement.

This exhibition, *Straight White Male*, began in France. I travelled there with my partner and two small children in 2014 after my solo exhibition at the Saatchi Gallery in London. The works in *Straight White Male* began as explorations of identity. Without knowledge of the French language or basic French history, the initial works began as self-portraits of unease. Like an alien in a foreign land I made paintings about the adrenalin-laced ecstasy of travel and relocation. I spent time at Jim Morrison's grave, hero-worshipping. For many years I've made works about sites of initiation or reverence and the misguided attempts young men make to self-initiate.

The major work in the exhibition is the 2014 8 x 2 metre *Fairy Bower Falls Rorschach No. 2*. It depicts the site of a massacre of aboriginal people in the Highlands of southeastern Australia, close to my home. At once a beautiful landmark, the aesthetic charm belies the brutal history of murder and destruction of culture that occurred at The Fairy Bower Falls and across the country in the 19th and first half of the 20th centuries. Rather than a negative rehash of history, I hope these massacre paintings are beautiful signifiers of an often hidden truth. By examining notions of truth, artists can only enrich layers of culture. In Australia, I feel these layers are thin, very thin. A reexamination of the role of straight white males in the brutal history of British colonisation will only enrich the layers of culture for future generations.

Also in the show are works about men who were conscripted into the Vietnam War for Australia. They are paintings made from live sittings with disempowered straight white males who have survived the mistaken military engagements of the past.

All of my work is loosely autobiographical. I do not engage overtly with postmodernist conceptual frameworks. I just make paintings in an organic response to my own experiences. My experience of being alive drenches my paintings. With the most simple and primitive tools I make works in response to my own existence.

—Ben Quilty

我是一個白人直男，出生在一個由白人直男為典範的國家中。我將質問這一典範以及在女權運動後存在缺陷的男性氣概。

此次的展覽《白人直男》開始於在法國的經歷。2014年，我在倫敦薩奇畫廊的個人展覽結束之後，與伴侶和兩個孩子旅行至法國。《白人直男》中的作品是從對身份的探索開始。在沒有法語和基本的法國歷史知識的背景下，最初的作品是表達極度不安感的自畫像。像一個外星人來到一片陌生的土地上，我的創作表現了在旅途和轉移中腎上腺素激發產生的狂喜。我像膜拜英雄一樣在吉姆·莫裡森的墓前駐足良久。許多年來，我的作品多是關於（某個）創始或崇拜的地點，以及年輕男性受到自我激勵但卻被誤導的努力。

展覽的主要作品是2014年創作的《綠蔭仙子瀑布羅夏克二號》，接近8x2m的尺寸。畫作描繪了澳大利亞東西部高山上土著部落大屠殺的事發地點，它離我的家很近。在這個美麗如畫的標志性地點，風景的魅力掩蓋了十九世紀和二十世紀上半葉發生在綠蔭仙子瀑布、以及遍及全國的屠殺歷史和對文化的毀滅。我的畫作並非是對這場歷史的負面再現，我希望這些關於大屠殺的繪畫能作為揭示隱蔽真相的美麗指示符。只有通過對真相的檢驗，藝術家才能充實文化的不同層面。我認為澳大利亞的文化層次很淺，非常的淺。重新質問白人直男在殘酷英國殖民歷史中的角色可以為後代積澱更豐富的文化。

展覽中的作品還與在澳大利亞應征卷入越南戰爭的男性作品有關，這些畫作是由從這場過去錯誤戰爭中倖存的白人直男現場坐著畫成的，所有的模特都沒有配備武器。

我所有的作品都帶有些許自傳性，並沒有在明顯的後現代主義觀念的框架下創作。我的創作是對生活經歷真實而自然的回應，作品洋溢著我鮮活的生命體驗。用最簡單的工具和材料，我表達對我自己個人經歷的感悟。

——本奎蒂



Dad with peacock hair
梳著孔雀冠髮型的父親, 2013
Oil on linen 亞麻布面油畫
135 x 115 cm (53 1/8 x 45 1/4 in.)

Straight White Male, Dad 白人直男, 父親, 2014
Oil on linen 亞麻布面油畫
80 x 70 cm (31 1/2 x 27 3/8 in.)





Painting for a rug about my Dad
有關父親的地毯的繪畫, 2014
Oil on linen 亞麻布面油畫
160 x 170 cm (63 x 67 in.)



Private Cary Adams, 7RAR, 69–70
二等兵加里·亞當斯7RAR, 69–70, 2014
Oil on linen 亞麻布面油畫
80 x 70 cm (31 1/2 x 27 3/8 in.)



Private Phil Butler 二等兵菲爾·巴特勒, 2014
Oil on linen 亞麻布面油畫
80 x 70 cm (31 1/2 x 27 3/8 in.)



Private Phillip Butler, 7ARU, No. 2
二等兵菲利普·巴特勒, 7ARU, 二號, 2014
Oil on linen 亞麻布面油畫
80 x 70 cm (31 1/2 x 27 3/8 in.)

SWM Private Butler
白人直男二等兵巴特勒, 2014
Oil on linen 亞麻布面油畫
130 x 110 cm (51 1/4 x 43 3/8 in.)



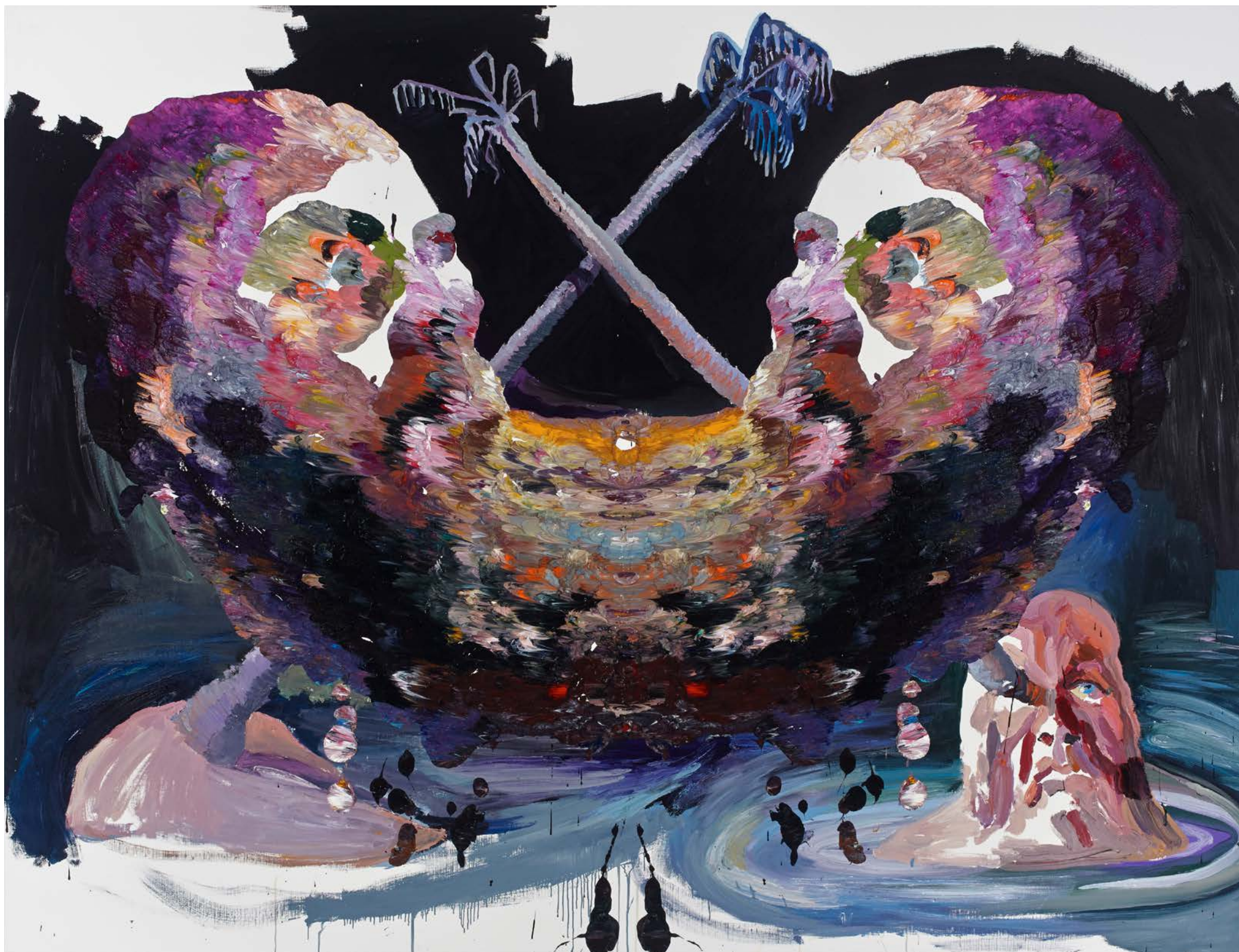


Straight White Male, Self-Portrait

白人直男, 自畫像, 2014

Oil on linen 亞麻布面油畫

170 x 160 cm (67 x 63 in.)



Island Self-Portrait with Phil Butler 孤島自畫像與菲爾·巴特勒, 2014, Oil on linen 亞麻布面油畫, 202 x 265 cm (79 1/2 x 104 3/8 in.)

Andre at Jim Morrison's Grave
在吉姆·莫里森墓旁的安德烈, 2014
Oil on linen 亞麻布面油畫
202 x 265 cm (79 1/2 x 104 3/8 in.)



BEN QUILTY

Ben Quilty was born in Sydney, Australia in 1973. In 1994 Quilty completed his Bachelor of Visual Arts, majoring in painting at the Sydney College of the Arts. He later went on to receive a certificate in Aboriginal Culture and History from Monash University in 1996, and in 2001 a Bachelor of Visual Communication at the University of Western Sydney.

Quilty grew up in the outer suburbs of northwestern Sydney, where he typified the self-destructive characteristics of Australian masculinity: drugs, alcohol, and recklessness. Quilty was a willing participant in this risk-taking and destructive behaviour, but always questioned it. It was this period of his life that inspired most of his work today. Images such as skulls, snakes and grotesque Siamese-twin compositions have since been seen in his paintings, creating a dark and uncanny genre across the majority of his artworks.

Quilty's painting style can be recognised from his thick layering of paint. He uses different types of palette knives, smearing the paint to create his figures. Quilty does not attempt to hide the strokes from his knife, rather he utilises the thick slabs of paint to block in large areas of the canvas with high contrast colours. He works fast and audiences can see each brushstroke, which gives a three-dimensional appearance and adds another element to his work. His paintings are said to "challenge assumptions" with the bold and unsettling objects which he depicts in his paintings.

Ben Quilty has been widely recognised for his artwork. Quilty's paintings of his Holden Torana produced a sell-out show in 2002 and since then his work has been seen in many exhibitions and art fairs. Some of his work can be seen at the Art Gallery of New South Wales as well as the Museum of Contemporary Art. Quilty won the Doug Moran Portrait Prize in 2009 for his painting of Jimmy Barnes, *There but for the Grace of God Go I, No.2*. In the same year Quilty was named runner-up for the Archibald Prize for the same portrait. He then won the Archibald Prize two years later for his portrait of Margaret Olley. In 2014, he received the top award at the inaugural Prudential Eye Awards in Singapore for his painting *Smashed Rorschach*.

His recent solo exhibitions include *Drawing: Ben Quilty Solo Exhibition* (2014), Tolarno Galleries, Melbourne, Australia; *The Fiji Wedding: Ben Quilty Solo Exhibition* (2013), Tolarno Galleries, Melbourne, Australia; and *My Brothers And Other Paintings: Ben Quilty Solo Exhibition* (2012), Jan Murphy Gallery, Adelaide, Australia.

His major solo exhibitions include *Young and Free?* (2004), Jan Murphy Gallery, Sydney; *Smashed* (2008), GRANTPIRRIE, Sydney; and *Critical Impact* (2009), GRANTPIRRIE, Melbourne.

Ben Quilty於1973年出生在澳大利亞悉尼。1994年，Ben Quilty在悉尼藝術學院完成了他的視覺藝術學士學位，主修繪畫。他之後又於1996年完成了莫納什大學原住民文化與歷史的課程，並於2001年在西悉尼大學完成了視覺傳達學士學位。

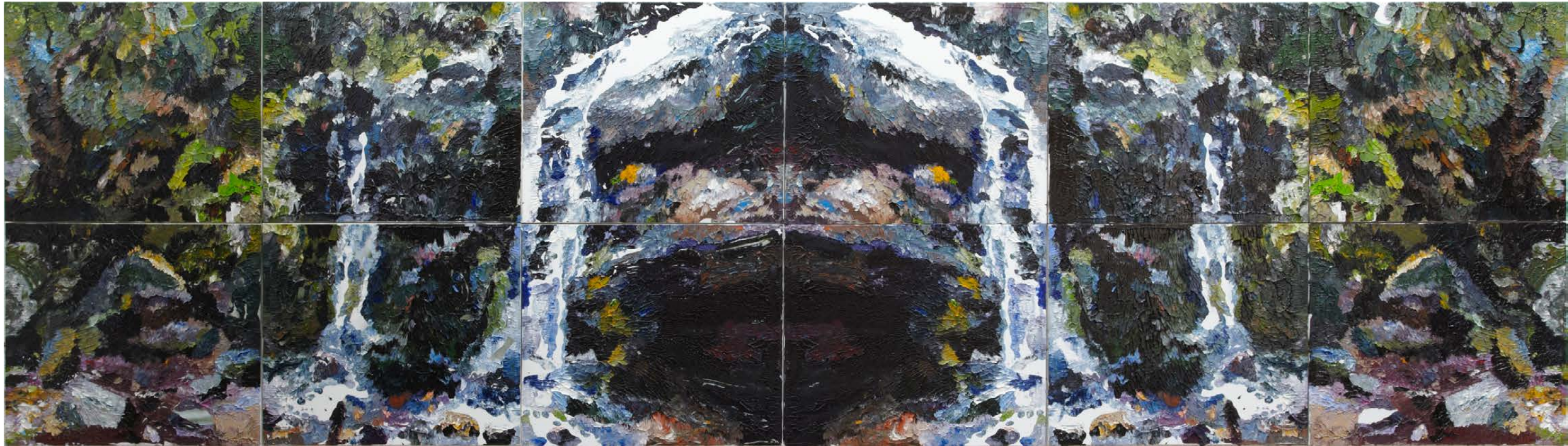
Ben Quilty在悉尼東北部的郊區長大，他的青年時代是一個典型的自我毀滅性的澳大利亞男性形象：毒品、酒精、玩世不恭。他雖然自願參與這些風險性大又具有毀滅性的行為，但同時也對這些行為抱有質疑。正是這段歷史背景賦予了他藝術創作的靈感。在他的大部分作品裏，他塑造了骷髏、蛇和怪誕的連體雙胞胎之類的形象，創造出一種黑暗又神秘的風格。

Ben Quilty的繪畫風格以厚實的分層塗料為主，他用不同形式的調色刀塗抹出他的人物。他從不試圖掩蓋刀痕，他用厚實同時又具有高對比度顏色的塗料大面積塗抹在畫布上。他下手大膽迅速，觀眾們能從每寸筆觸中看出三維立體的影像，並因此增加了他作品的元素。他的繪畫因為其對於大膽而無序的物體的描繪被稱為「挑戰假想」。Ben Quilty的作品已被廣泛認可。自從他畫有Holden Torana車型的作品於2002年被一售而空後，他的作品在許多展覽和藝術博覽會出現。部分作品已成為新南威爾士藝術館和當代美術館的固定收藏。Ben Quilty曾以繪畫作品《Jimmy Barnes, There but for the Grace of God Go I, No. 2》贏得2009年的Doug Moran國家肖像獎。同年，Ben Quilty以同部作品入圍了Archibald獎。兩年後，他以Margaret Olley的畫像贏得了Archibald獎。2014年，他以《Smashed Rorschach》贏得了首屆新加坡Prudential Eye當代亞洲藝術獎。

他的近期個展包括：《繪畫：Ben Quilty個展》(2014)，Tolarno畫廊，澳大利亞墨爾本、《斐濟婚禮：Ben Quilty個展》(2013)，Tolarno畫廊，澳大利亞墨爾本、《我的兄弟和其他繪畫：Ben Quilty個展》(2012)，Jan Murphy畫廊，澳大利亞阿德萊德。他的重要個展包括：《年輕又自由？》(2004)，Jan Murphy畫廊，澳大利亞悉尼、《粉碎》(2008)，GRANTPIRRIE，澳大利亞悉尼和《關鍵影響》(2009)，GRANTPIRRIE，澳大利亞墨爾本。



The Photojournalist (AQ)
攝影記者(安德魯·奎爾蒂), 2014
Oil on linen 亞麻布面油畫
140 x 190 cm (55 1/8 x 74 7/8 in.)



Fairy Bower Falls Rorschach No. 2 綠蔭仙子瀑布羅夏克二號, 2014, Oil on linen 亞麻布面油畫, 220 x 780 cm (86 5/8 x 307 1/8 in.)

Utopia 烏托邦, 2014
Oil on linen 亞麻布面油畫
202 x 265 cm (79 1/2 x 104 3/8 in.)





Homeland 故乡, 2014, Oil on linen 亞麻布面油畫, 202 x 265 cm (79 1/2 x 104 3/8 in.)

BEN QUILTY

1973 Born in Sydney, Australia
1994 Graduated from Sydney College of Arts
1996 Received a certificate in Aboriginal Culture and History from Monash University
2001 Bachelor of Visual Communication from the University of Western Sydney
Present Lives and works in Australia

Selected Solo Exhibitions

2015 *Ben Quilty: Straight White Male*, Pearl Lam Galleries, Hong Kong
2014 *Ben Quilty*, Galerie Allen, Paris, France
Ben Quilty, Saatchi Gallery, London, UK
Ben Quilty: Kuta Beach, Hong Kong Art Fair with Tolarno Galleries, Hong Kong, China
Ben Quilty: Drawing, Tolarno Galleries, Melbourne, Australia
2013 *Trigger-Happy: Ben Quilty's Brave New World*, Drill Hall Gallery Australian National University Canberra, Australia
Olivia's Dream, Jan Murphy Gallery, Brisbane, Australia
Ben Quilty: The Fiji Wedding, Tolarno Galleries, Melbourne, Australia
Ben Quilty: After Afghanistan, National Art School, Sydney (then touring nationally), Australia
2012 *Ben Quilty: My Brothers and Other Paintings*, Jan Murphy Gallery Offsite, Adelaide, Australia
Ben Quilty, Jan Murphy Gallery at Korean International Art Fair, Seoul, Korea
Ben Quilty, Jan Murphy Gallery at Melbourne International Art Fair, Melbourne, Australia
2011 *Ben Quilty*, Jan Murphy Gallery at Korean International Art Fair, Seoul, Korea
A Convergence of Birds, curated by Andrew Frost, Goulburn Regional Art Gallery, Australia
The Evo Project, GRANTPIRRIE, Offsite, Hong Kong, China
2010 *Trashed*, LOST Projects, Manila, Philippines
Inhabit, GRANTPIRRIE, Sydney, Australia
Ben Quilty, Jan Murphy Gallery, Brisbane, Australia
2009 *Critical Impact*, GRANTPIRRIE, Offsite, Melbourne, Australia
Ben Quilty LIVE!, University of Queensland Art Museum, Touring to Tarrawarra Museum of Art, Melbourne, Australia
2008 *Smashed*, GRANTPIRRIE at the Melbourne Art Fair, touring to Newcastle University Art Gallery
Smashed, GRANTPIRRIE, Sydney, Australia
More Work From The Man Cave, Jan Murphy Gallery, Brisbane, Australia
2007 *Death Wish*, Newcastle Region Art Gallery, Newcastle, Australia
New Work From The Man Cave, Jan Murphy Gallery, Brisbane, Australia
Pride and Patriotism, GRANTPIRRIE, Sydney, Australia
2006 *Ben Quilty*, Jan Murphy Gallery at the Melbourne Art Fair, Melbourne, Australia
Ache, GRANTPIRRIE, Sydney, Australia
2005 *We've Gotta Get Out Of This Place*, Jan Murphy Gallery, Brisbane, Australia
Life's What You Do While You're Waiting To Die, Mansuett Wickes, Mary Place Gallery, Sydney, Australia
2004 *Beauty, Rich and Rare*, Scott Livesey Art Dealer, Melbourne, Australia
Young and Free?, Jan Murphy Gallery, Brisbane, Australia
2003 *Torana*, Maunsell Wickes Gallery, Sydney, Australia
2002 *New Paintings*, Barry Stern Galleries, Sydney, Australia
2001 *Paris*, Step Gallery, Sydney, Australia

Selected Group Exhibitions

2014 *Embodied*, Pearl Lam Galleries, Hong Kong, China
Art Taipei, Pearl Lam Galleries, Taipei, Taiwan
Art International, Pearl Lam Galleries, Istanbul, Turkey
Adelaide Biennial of Australian Art: *Dark Heart*, Art Gallery of South Australia, Australia
Private Assembly: A Contemporary Collection, Tweed Regional Gallery, Tweed, Australia
Prudential Eye Award for Contemporary Art Exhibition, Singapore
2013 Sydney Contemporary Art Fair, Jan Murphy Gallery, Sydney, Australia
Air Born, McClelland Gallery, Victoria, Australia
Middle Head Exhibition, Mosman Art Gallery, Mosman, Australia
Divide and Context, Goulburn Regional Art Gallery, Goulburn, Australia
2012 *Rapture of Death*, curated by Prue Gibson, Gippsland Art Gallery, Wellington, Australia
Midwinter Master: Artist & Mentor, The Gallery at Bayside Arts and Cultural Centre, Melbourne, Australia
The Gold Award, Rockhampton Art Gallery, Rockhampton, Australia
The Redlands Art Prize NAS Gallery, National Art School, Darlinghurst, Sydney, Australia (Winner)
The Archibald Prize Art Gallery of New South Wales, Sydney, Australia
2011 *In Great Trouble: The Traumatic Australian Landscape*, curated by Fiona Lowry, Bondi Beach, Australia
Hong Kong Art Fair, GRANTPIRRIE, Hong Kong
The Archibald Prize Art Gallery of New South Wales, Sydney, Australia (Winner)
Out of the Comfort Zone, curated by Virginia Wilson, Customs House, Sydney, Australia
Together in Harmony for 50 Years: Linking Australian and Korean Arts, Korea Cultural Exchange Centre, Seoul, Korea
Awake, Bom Gallery, Seoul, Korea
Australian Masterpieces from the TWMA Collection, TarraWarra Museum of Art, Victoria, Australia
2010 *Hayman Collection: Volume One*, curated by Adam Harding, Horsham Regional Art Gallery, Victoria, Australia
2009 *Salon*, Newcastle Region Art Gallery, curated by Ben Quilty, Newcastle, Australia
Hong Kong Art Fair, GRANTPIRRIE, Hong Kong, China
On Rage, curated by Ben Quilty, Jan Murphy Gallery, Brisbane, Australia
The Archibald Prize Art Gallery of New South Wales, Sydney, Australia
Doug Moran National Portrait Prize, Australia (Winner)
2008 *In Captivity, Animals in the Dubbo Regional Gallery Collection*, Dubbo Regional Gallery, Dubbo, Australia
The Archibald Prize Exhibition Art Gallery of New South Wales, Sydney, Australia
2007 New Acquisitions, Museum of Contemporary Art, Sydney, Australia
Past Winners Exhibition, Brett Whitley Studio, Sydney, Australia
2006 *Truth and Likeness*, National Portrait Gallery, Canberra, Australia
The Kedumba Contemporary Drawing Award, New South Wales, Australia
The Archibald Prize exhibition, Art Gallery of New South Wales, Sydney, Australia
2005 *Autofetish: Mechanics of Desire*, Newcastle Regional Gallery, Newcastle, Australia
The Archibald Prize Exhibition, Art Gallery of New South Wales, Sydney, Australia
10th Anniversary Exhibition, Jan Murphy Gallery, Brisbane, Australia
2004 Archibald and Wynne Prize Exhibitions, Art Gallery of New South Wales, Sydney, Australia
Mosman Art Prize, Mosman Art Gallery and Community Centre, Mosman, Australia

	Metro 5 Art Prize, Melbourne, Australia
	Kings School Art Prize (Winner)
2003	Emerging Artists at Mary Place, Sydney, Australia
	Metro 5 Art Prize, Melbourne, Australia
2002	Brett Whitley Travelling Art Scholarship AGNSW, Sydney, Australia (Winner)
	Emerging Artists at Mary Place Inaugural Group Show, Sydney, Australia
2001	Mosman Art Prize, Mosman Art Gallery and Community Centre, Mosman, Australia
2000	Brett Whiteley Travelling Art Scholarship, Art Gallery of NSW, Sydney, Australia (Finalist)

Prizes and Achievements

2014	Prudential Eye Awards, Singapore (Overall Winner)
	Prudential Eye Awards, Singapore (Painting)
2013	Artist of the year GQ
2012	Archibald Prize, Art Gallery of New South Wales, Sydney, Australia (Finalist)
	Gold Award, Rockhampton Art Gallery, Queensland (Finalist)
	The Redlands Art Prize NAS Gallery
2011	Archibald Prize, Art Gallery of New South Wales, Sydney, Australia (Winner)
2009	Doug Moran National Portrait Prize, Sydney, Australia
2007	National Self Portrait Prize, University of Queensland Art Museum, Brisbane, Australia
2004	Kings School Art Prize, Sydney, Australia
	Metro 5 Art Prize, Melbourne, Australia
	Kings School Art Prize, Sydney, Australia
2002	Brett Whiteley Travelling Art Scholarship, Art Gallery of New South Wales, Sydney, Australia

Selected Public Collections

Art Gallery of New South Wales, Sydney, Australia
 Art Gallery of South Australia, Adelaide, Australia
 Bathurst Regional Art Gallery, Bathurst, Australia
 Burnie Regional Gallery, Burnie, Tasmania
 Dubbo Regional Gallery, Dubbo, Australia
 Goulburn Regional Art Gallery, Goulburn, Australia
 Ipswich Regional Gallery, Ipswich, Queensland, Australia
 Kedumba Contemporary Drawing Collection, New South Wales, Australia
 Museum of Contemporary Art, Sydney, Australia
 Macquarie Bank, Australia
 Newcastle Regional Art Gallery, Newcastle, Australia
 New England Regional Gallery, Armidale, New South Wales, Australia
 Queensland University of Technology Art Museum, Brisbane, Australia
 TarraWarra Museum of Art, Healesville, Australia
 University of Queensland Art Museum, Brisbane, Australia

BEN QUILTY

1973	出生於澳大利亞悉尼
1994	畢業於悉尼藝術學院
1996	於莫納什大學完成原住民文化和歷史課程
2001	畢業於西悉尼大學視覺傳達系
現今	生活和工作於澳大利亞

主要個展

2015	《Ben Quilty: 白人直男》, 藝術門, 中國 香港
2014	《Ben Quilty》, Allen畫廊, 法國 巴黎
	《Ben Quilty》, Saatchi畫廊, 英國 倫敦
	《Ben Quilty 库塔海滩》, Tolarno畫廊, 香港藝術博覽會, 香港
	《Ben Quilty 繪畫》, Tolarno畫廊, 澳大利亞 墨爾本
2013	《觸發幸福: Ben Quilty的美麗新世界》, Drill Hall畫廊, 澳大利亞國立大學, 澳大利亞 堪培拉
	《奧莉薇亞夢想》Jan Murphy畫廊, 澳大利亞 布里斯班
	《斐濟婚禮》, Tolarno畫廊, 澳大利亞 墨爾本
	《阿富汗之後》, 悉尼國立藝術學院及巡展, 澳大利亞 悉尼
2012	《我的兄弟及其他繪畫》, Jan Murphy畫廊, 澳大利亞 布里斯班
	Jan Murphy 畫廊, 韓國國際藝術博覽會, 韓國 首爾
	Jan Murphy 畫廊, 墨爾本國際藝術博覽會, 澳大利亞 墨爾本
2011	Jan Murphy 畫廊, 韓國國際藝術博覽會, 韓國 首爾
	《鳥的收斂》, 古爾本地區藝術畫廊, 澳大利亞 墨爾本
	《Evo計劃》, GRANTPIRRIE Offsite, 中國 香港
2010	《廢棄》, LOST Projects, 菲律賓 馬尼拉
	《棲息》 GRANTPIRRIE, 澳大利亞 悉尼
	《Ben Quilty》, Jan Murphy畫廊, 澳大利亞 布里斯班
2009	《關鍵影響》, GRANTPIRRIE Offsite, 澳大利亞 墨爾本
	《Ben Quilty LIVE!》, 昆士蘭大學美術館, 澳大利亞 墨爾本
2008	《粉碎》, GRANTPIRRIE, 墨爾本藝術博覽會, 紐卡斯爾大學美術館巡展
	《粉碎》, GRANTPIRRIE, 澳大利亞 悉尼
	《來自The Man Cave的更多作品》, Jan Murphy畫廊, 澳大利亞 布里斯班
2007	《死亡-願望》, 紐卡斯爾地區藝術畫廊, 澳大利亞 紐卡斯爾
	《來自The Man Cave的新作品》, Jan Murphy畫廊, 澳大利亞 布里斯班
	《自豪感與愛國主義》, GRANTPIRRIE, 澳大利亞 悉尼
2006	《Ben Quilty》, Jan Murphy畫廊, 墨爾本藝術博覽會, 澳大利亞 墨爾本
	《痛》, GRANTPIRRIE, 澳大利亞 悉尼
2005	《我們必須逃出去》, Jan Murphy畫廊, 澳大利亞 布里斯班
	《生活就是等死時做你該做的》, Mansuell Wickes At Mary Place畫廊, 澳大利亞 悉尼
2004	《美麗, 富有而稀少》, Scott Livesey Art Dealer, 澳大利亞 墨爾本
	《年輕又自由? 》, Jan Murphy畫廊, 澳大利亞 布里斯班
2003	《Torana》, Maunsell Wickes畫廊, 澳大利亞 悉尼
2002	《新繪畫》, Barry Stern畫廊, 澳大利亞 悉尼
2001	《巴黎》, Step畫廊, 澳大利亞 悉尼

	主要群展
2014	《體現》，藝術門，中國 香港 《台北國際藝術博覽會》，藝術門，台灣 台北 《伊斯坦布爾國際藝術博覽會》，藝術門，土耳其 伊斯坦布爾 《阿德萊德澳大利亞藝術雙年展：黑暗心臟》，南澳大利亞藝術畫廊，澳大利亞 《當代藝術藏品展》，特維德畫廊，澳大利亞 特維德 新加坡Prudential Eye當代亞洲藝術獎，新加坡
2013	《悉尼當代藝術博覽會》，Jan Murphy畫廊，澳大利亞 悉尼 《生於空氣》，McClelland畫廊，澳大利亞 維多利亞 《分離與語境》，古爾本畫廊，澳大利亞 古爾本 《Middle Head展覽》，Mosman畫廊，澳大利亞 莫斯曼 《死亡的狂喜》，Gibbsland畫廊，澳大利亞 惠靈頓 《隆冬大師展：藝術家及精神導師》，濱海文化藝術中心，澳大利亞 墨爾本
2012	《金獎》，Rockhampton藝術畫廊，澳大利亞 洛克漢普頓 The Redlands藝術獎，NAS畫廊，澳大利亞 悉尼（冠軍） Archibald獎，新南威爾士藝術館，澳大利亞 悉尼
2011	《巨大的困難：澳大利亞景觀的創傷》，Bondi海灘，澳大利亞 悉尼 《香港藝術博覽會》，GRANTPIRRIE，中國 香港 Archibald獎，新南威爾士藝術館，澳大利亞 悉尼（冠軍） 《走出舒適帶》，海關大樓，澳大利亞 悉尼 《和諧共存五十載：澳大利亞與韓國藝術的聯結》，韓國文化交流中心，韓國 首爾 《覺醒》，Bom畫廊，韓國 首爾 《TWMA澳大利亞傑作收藏》，特拉瓦拉美術館，澳大利亞 維多利亞
2010	《Hayman收藏品：卷一》，霍舍姆地區藝術畫廊，澳大利亞 維多利亞
2009	《沙龍》，紐爾斯卡地區畫廊，澳大利亞 紐爾斯卡 《香港藝術博覽會》，GRANTPIRRIE，中國 香港 《憤怒》，Jan Murphy畫廊，澳大利亞布里斯班 Archibald獎，新南威爾士藝術館，澳大利亞 悉尼 Doug Moran國家肖像獎（冠軍），澳大利亞 悉尼
2008	《圈養—達博地區藝術畫廊關於動物的收藏品》，達博地區藝術畫廊，澳大利亞 達博 Archibald獎，新南威爾士藝術館，澳大利亞 悉尼
2007	《最新館藏》，當代藝術美術館，澳大利亞 悉尼 《往屆冠軍展》，Brett Whitley工作室，澳大利亞 悉尼
2006	《真相和相似》，國家肖像畫廊，澳大利亞 堪培拉 The Kedumba新南威爾士州當代繪畫大獎 Archibald獎，新南威爾士藝術館，澳大利亞 悉尼
2005	《Autofetish：慾望力學》紐卡斯爾地區美術館，澳大利亞 紐卡斯爾 Archibald獎，新南威爾士藝術館，澳大利亞 悉尼 《10周年慶畫展》，Jan Murphy畫廊，澳大利亞 布里斯班
2004	Archibald獎及Wynne獎作品展覽，新南威爾士藝術館，澳大利亞 悉尼 Mosman藝術獎，Mosman藝術畫廊和社區中心，澳大利亞 悉尼 Metro 5藝術獎，澳大利亞 墨爾本

2003	國王學院藝術獎（冠軍），澳大利亞 墨爾本 《Mary Place新興藝術家群展》，澳大利亞 悉尼 Metro 5藝術獎，澳大利亞 墨爾本
2002	Brett Whitley遊學獎學金（冠軍），新南威爾士藝術館，澳大利亞 悉尼 《首屆Mary Place新興藝術家群展》，澳大利亞 悉尼
2001	Mosman藝術獎，Mosman藝術畫廊和社區中心，澳大利亞 悉尼
2000	Brett Whiteley藝術遊學獎學金，澳大利亞 悉尼

獎項及成就

2014	Prudential Eye亞洲當代藝術獎（綜合），新加坡 Prudential Eye亞洲當代藝術獎（繪畫），新加坡
2013	GQ年度藝術家
2012	入圍，Archibald獎，新南威爾士州美術館，澳大利亞 悉尼 入圍，金獎，Rockhampton Art畫廊，澳大利亞 昆士蘭州 The Redlands藝術獎，NAS畫廊
2011	冠軍，Archibald獎，新南威爾斯藝術館，澳大利亞 悉尼
2009	Doug Moran國家肖像獎，澳大利亞 悉尼
2007	國家自畫像獎，昆士蘭大學美術館，澳大利亞 布里斯班
2004	國王學院藝術獎，澳大利亞 悉尼 Metro 5藝術獎，澳大利亞 墨爾本 國王學院藝術獎，澳大利亞 悉尼
2002	Brett Whiteley藝術遊學獎學金，新南威爾斯藝術館，澳大利亞 悉尼

主要收藏

新南威爾士藝術館，澳大利亞 悉尼
南澳大利亞州藝術館，澳大利亞 阿德萊德
巴瑟斯特地區美術館，澳大利亞 巴瑟斯特
伯尼區地區畫廊，澳大利亞 塔斯馬尼亞州
達博區畫廊，澳大利亞 達博
古爾本地區畫廊，澳大利亞 古爾本
伊普斯維奇地區畫廊，澳大利亞 伊普斯維奇
Kedumba當代繪畫收藏，澳大利亞 新南威爾士州
悉尼當代藝術博物館，澳大利亞 悉尼
麥格理銀行，澳大利亞
紐卡斯爾地區美術館，澳大利亞 紐卡斯爾
新英格蘭地區畫廊，澳大利亞 阿米代爾
昆士蘭科技大學美術館，澳大利亞 布里斯班
特拉瓦拉藝術館，澳大利亞 塔拉沃拉
昆士蘭大學美術館，澳大利亞 布里斯班

PearlLam Galleries

Pearl Lam Galleries, 9 Lock Road, #03-22, Gillman Barracks, Singapore 108937, tel (65) 6570 2284, fax (65) 6694 5967
Pearl Lam Galleries, 601-605, 6/F, Pedder Building, 12 Pedder Street, Central, Hong Kong, tel (852) 2522 1428, fax (852) 2840 1088
Pearl Lam Fine Art, 181 Middle Jiangxi Road G/F, Shanghai, China 200002, tel (8621) 6323 1989, fax (8621) 6323 1988
藝術門 香港中環畢打街12號 畢打行6樓601-605號 電話 (852) 2522 1428 傳真 (852) 2840 1088
藝術門 中國上海市江西中路181號 郵編200002 電話 (8621) 6323 1989 傳真 (8621) 6323 1988

