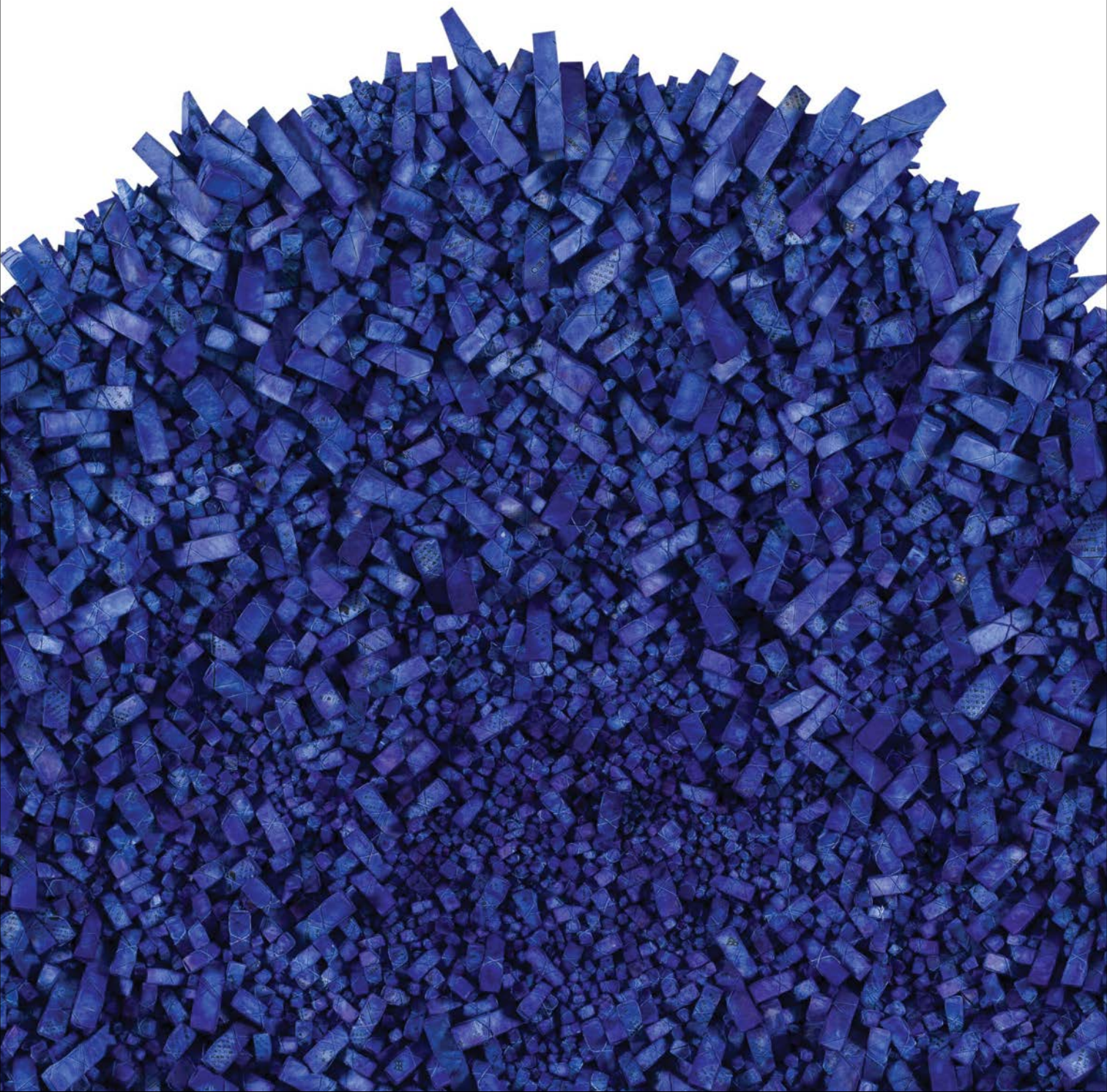


CHUN KWANG YOUNG
Aggregation





Cover: **Aggregation 15-SE052 (Star 5)** (detail), 2015, Mixed media with Korean mulberry paper, ϕ 200 cm (ϕ 78 3/4 in.)

This page: **Aggregation 11-AP030 Blue & Red** (detail), 2011, Mixed media with Korean mulberry paper, 163 x 228 cm (64 1/8 x 89 3/4 in.)

CHUN KWANG YOUNG

Seoul-based artist Chun Kwang Young (b. 1944, Hongcheon County, Korea) received his BFA from Hongik University in Korea, and MFA from the Philadelphia College of Art, USA. Known for his sculptural assemblages—both freestanding pieces and wall-hung low reliefs—Chun composes his forms from a myriad of small shapes wrapped in Korean mulberry paper. With a trompe l'oeil quality, Chun's sculptures create the illusion of depth and coalescence and, ultimately, represent the harmony and conflict in the unity of many.

Inspired by childhood memories of clusters of medicine packages, wrapped in mulberry paper and hung from the ceiling at the clinic, Chun Kwang Young began using this material in his works, deeply imbuing them with distinctly Korean connotations and sensibilities. His well-known sculptural *Aggregations* feature hand-cut triangles of polystyrene, individually wrapped in delicate mulberry paper pages torn from old books. The result is a strikingly textured low-relief wall work, both visually and materially. Chun also works with monumental sculptural pieces that feature sensuous surfaces rippling with texture, either suspended from the ceiling or rising from the ground.

Chun has been exhibited extensively around the world. Major solo exhibitions include *Aggregations* (2015), Beck & Eggeling Gallery, Dusseldorf, Germany; *Kwang Young Chun: New Work* (2014), Bernard Jacobson Gallery, London, UK; *Chun Kwang Young Solo Exhibition* (2013), Museum of Seoul National University, Seoul, Korea; *Kwang-Young Chun: Aggregations* (2011), Knoxville Museum of Art,

Tennessee, USA; *Kwang-Young Chun* (2006), Kim Foster Gallery, New York, USA; and a solo exhibition at Fine Art Center (1976), Seoul, Korea.

Major group exhibitions include the Venice Biennale (2015), Palazzo Grimani Art Museum, Venice, Italy; *Odd Volumes: Book Art from the Allan Chasanoff Collection* (2014), Yale University Art Gallery, Connecticut, USA; Holland Paper Biennial (2006), CODA Museum, Apeldoorn, The Netherlands; *Yokohama Contemporary Artists Exhibition* (1986), The Museum of Yokohama, Yokohama, Japan; and *The Shin Sang Group Show* (1966–67), National Museum of Modern Art, Seoul, Korea.

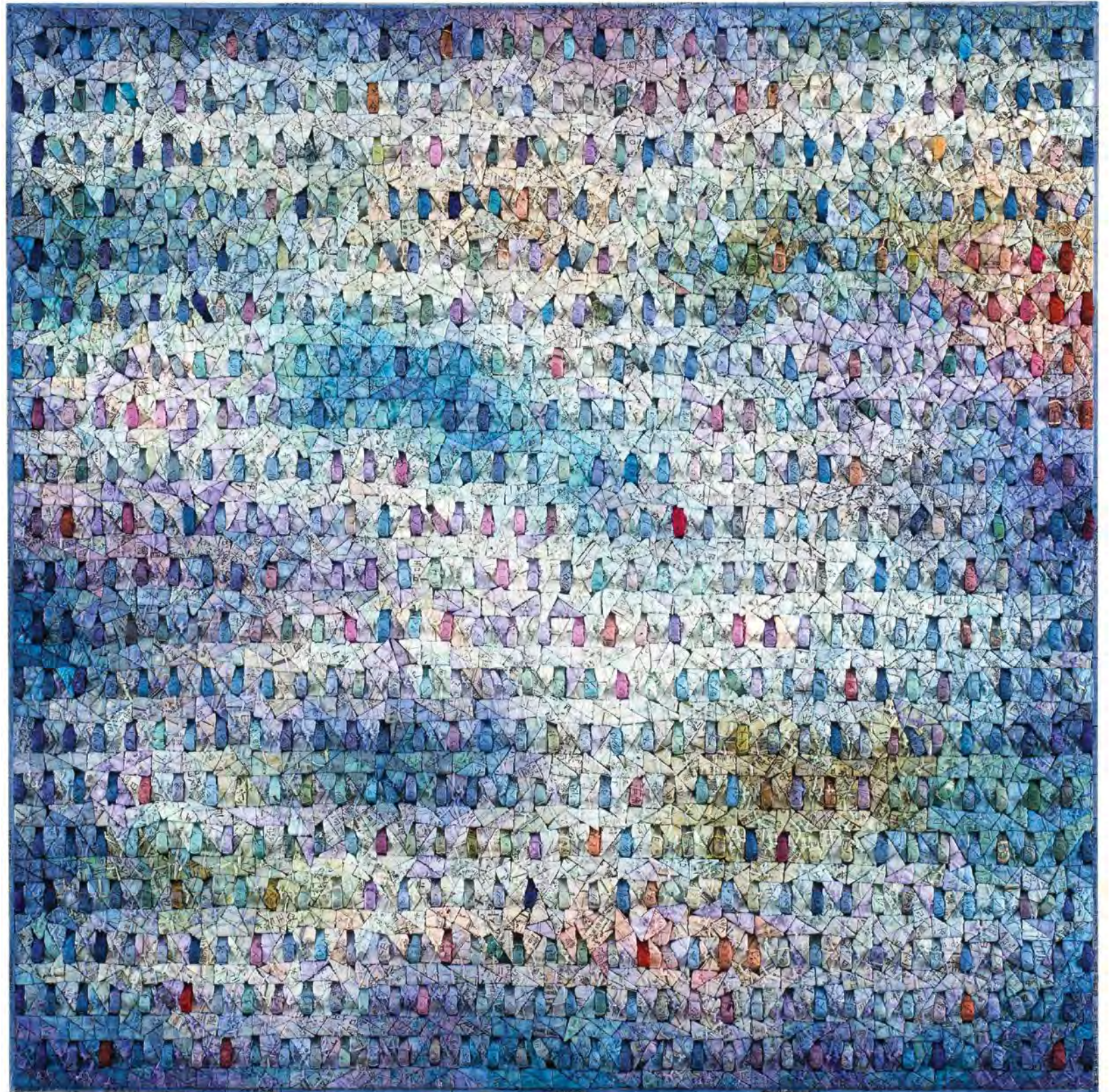
Chun Kwang Young's works have been acquired by and are included in esteemed public collections such as the Rockefeller Foundation in New York, the Victoria and Albert Museum in London, the Woodrow Wilson International Center in Washington D.C., the United Nations headquarters in New York, the National Museum of Contemporary Art in Gwacheon, the Philadelphia Society Building, Seoul Museum of Art, the National Gallery of Australia at Canberra, Fidelity Investments Boston, Museum Kunstwerk in Germany, and the Busan Art Museum, among others. Named the Artist of the Year by the National Museum of Contemporary Art, Gwacheon, in 2001, Chun has also received many other accolades recognising the unique beauty of his works. Most recently, he was awarded the Presidential Prize in the 41st Korean Culture and Art Prize by the Ministry of Culture, Sports and Tourism in Korea in 2009.



Aggregation 15-MA015 (Dream 4), 2015
Mixed media with Korean mulberry paper
118 x 92 cm (46 1/2 x 36 5/8 in.)



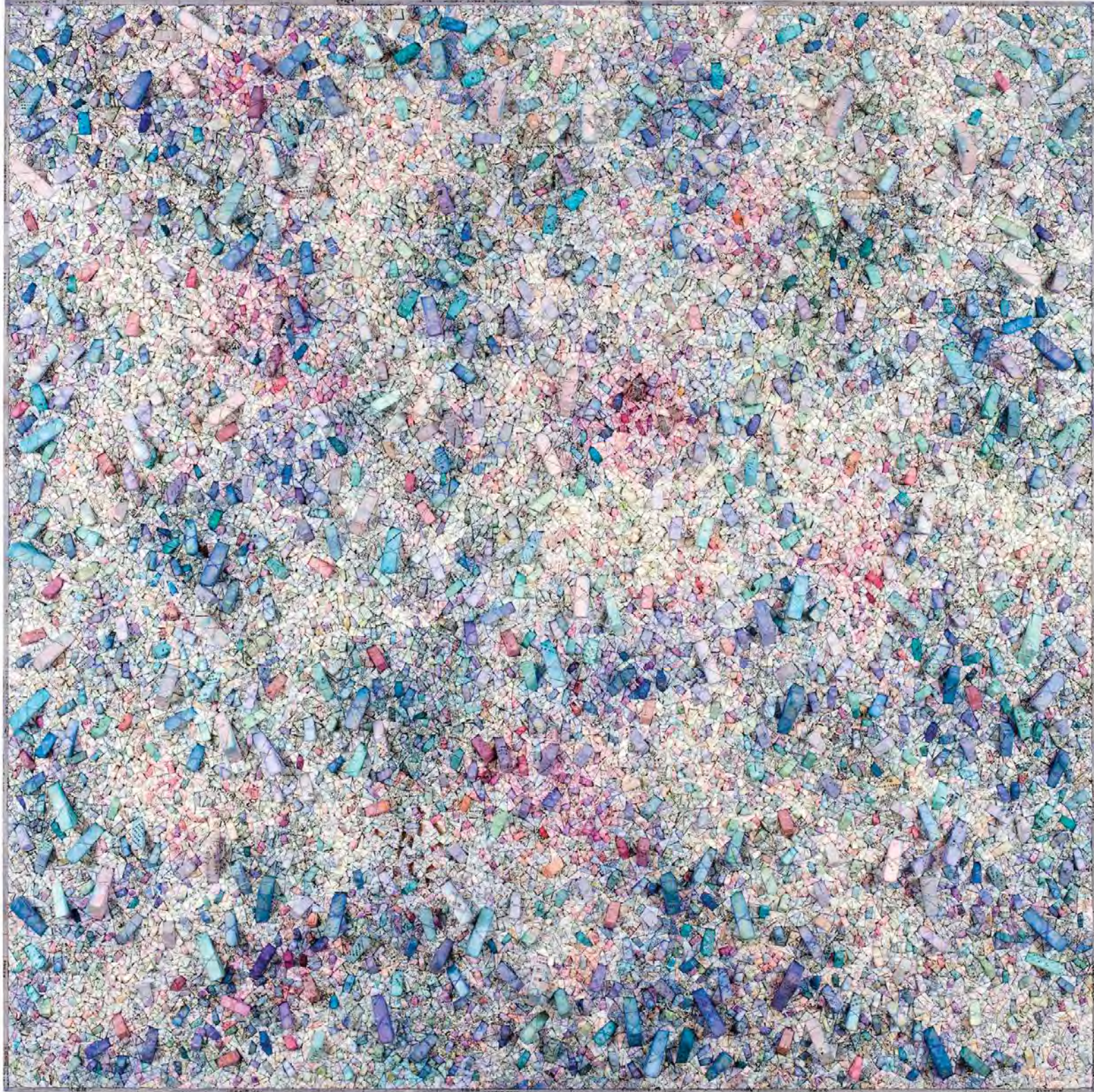
Aggregation 15-FE010 (Dream 3), 2015
Mixed media with Korean mulberry paper
101 x 101 cm (39 3/4 x 39 3/4 in.)







Aggregation 14-NV054 (Dream 19), 2014
Mixed media with Korean mulberry paper
163 x 131 cm (64 1/8 x 51 5/8 in.)



Aggregation 14-DE067 (Desire 16), 2014
Mixed media with Korean mulberry paper
201 x 201 cm (79 1/8 x 79 1/8 in.)

Aggregation 14-NV062 (Desire 13), 2014
Mixed media with Korean mulberry paper
118 x 92 cm (46 1/2 x 36 1/4 in.)





Aggregation 15-SE055, 2015
Mixed media with Korean mulberry paper
195 x 131 cm (76 3/4 x 51 5/8 in.)



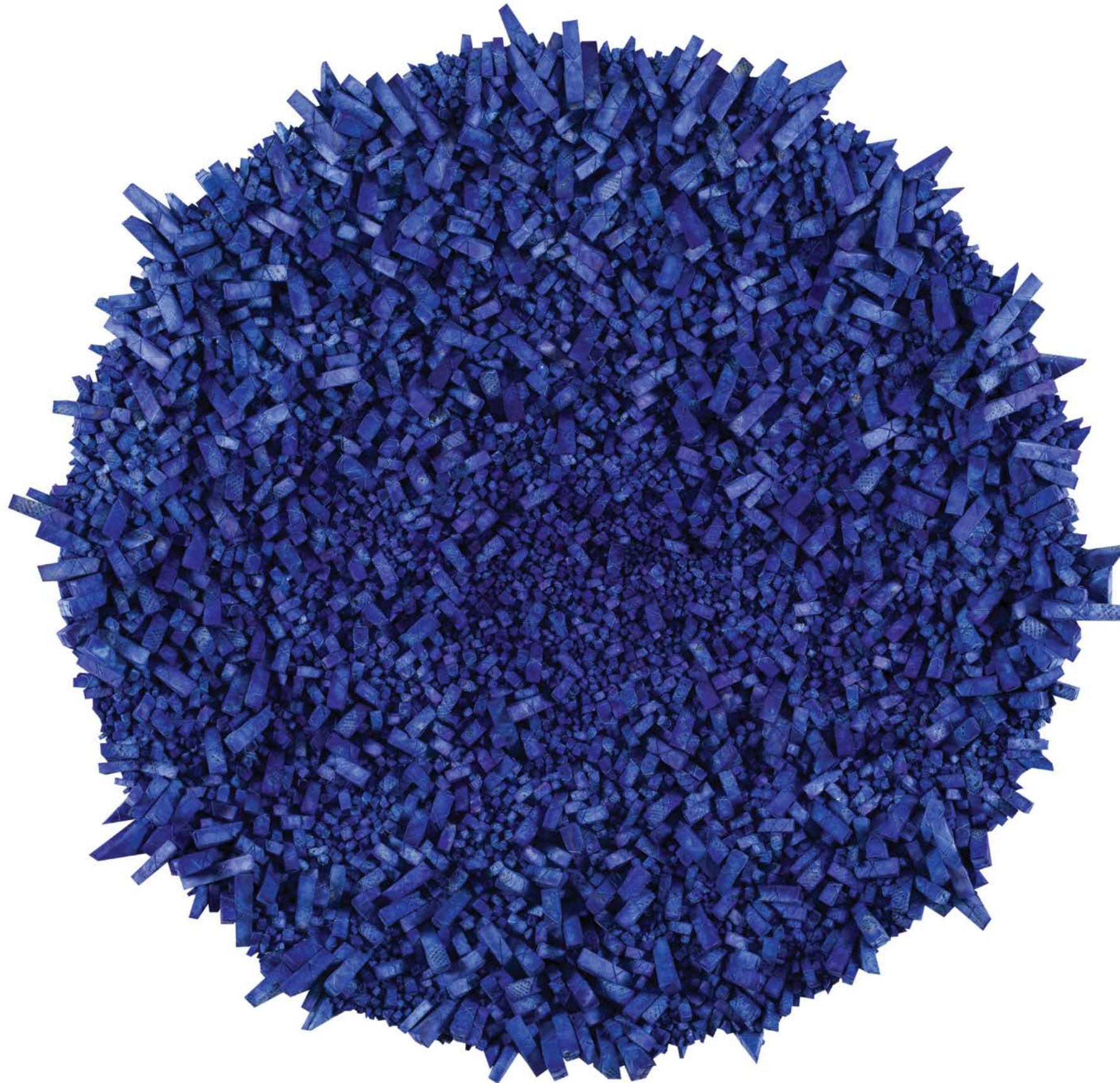


Aggregation 15-AU043, 2015
Mixed media with Korean mulberry paper
163 x 131 cm (64 1/8 x 51 5/8 in.)





Aggregation 15-MY027 (Star 4), 2015
Mixed media with Korean mulberry paper
Φ200 cm (Φ78 3/4 in.)



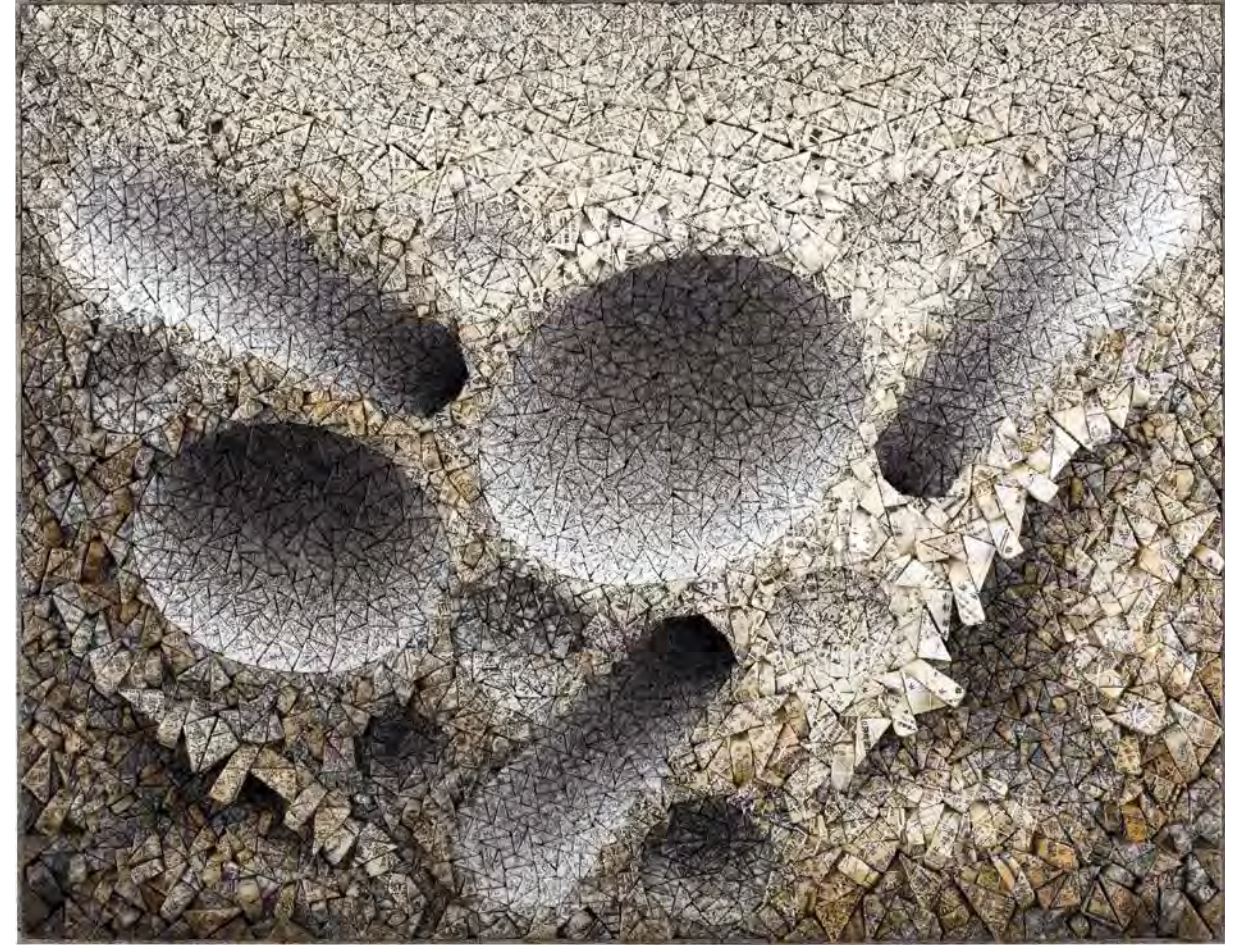
Aggregation 15-SE052 (Star 5), 2015
Mixed media with Korean mulberry paper
Φ200 cm (Φ78 3/4 in.)



Aggregation 11-AP030 Blue & Red, 2011, Mixed media with Korean mulberry paper, 163 x 228 cm (64 1/8 x 89 3/4 in.)



Aggregation 15-SE054, 2015, Mixed media with Korean mulberry paper, 92 x 118 cm (36 5/8 x 46 1/2 in.)



Aggregation 15-MA017, 2015, Mixed media with Korean mulberry paper, 92 x 118 cm (36 5/8 x 46 1/2 in.)



Aggregation 15-SE057, 2015, Mixed media with Korean mulberry paper, 131 x 163 cm (51 5/8 x 64 1/8 in.)



Aggregation 15-MA016, 2015, Mixed media with Korean mulberry paper, 132 x 195 cm (52 x 76 3/4 in.)

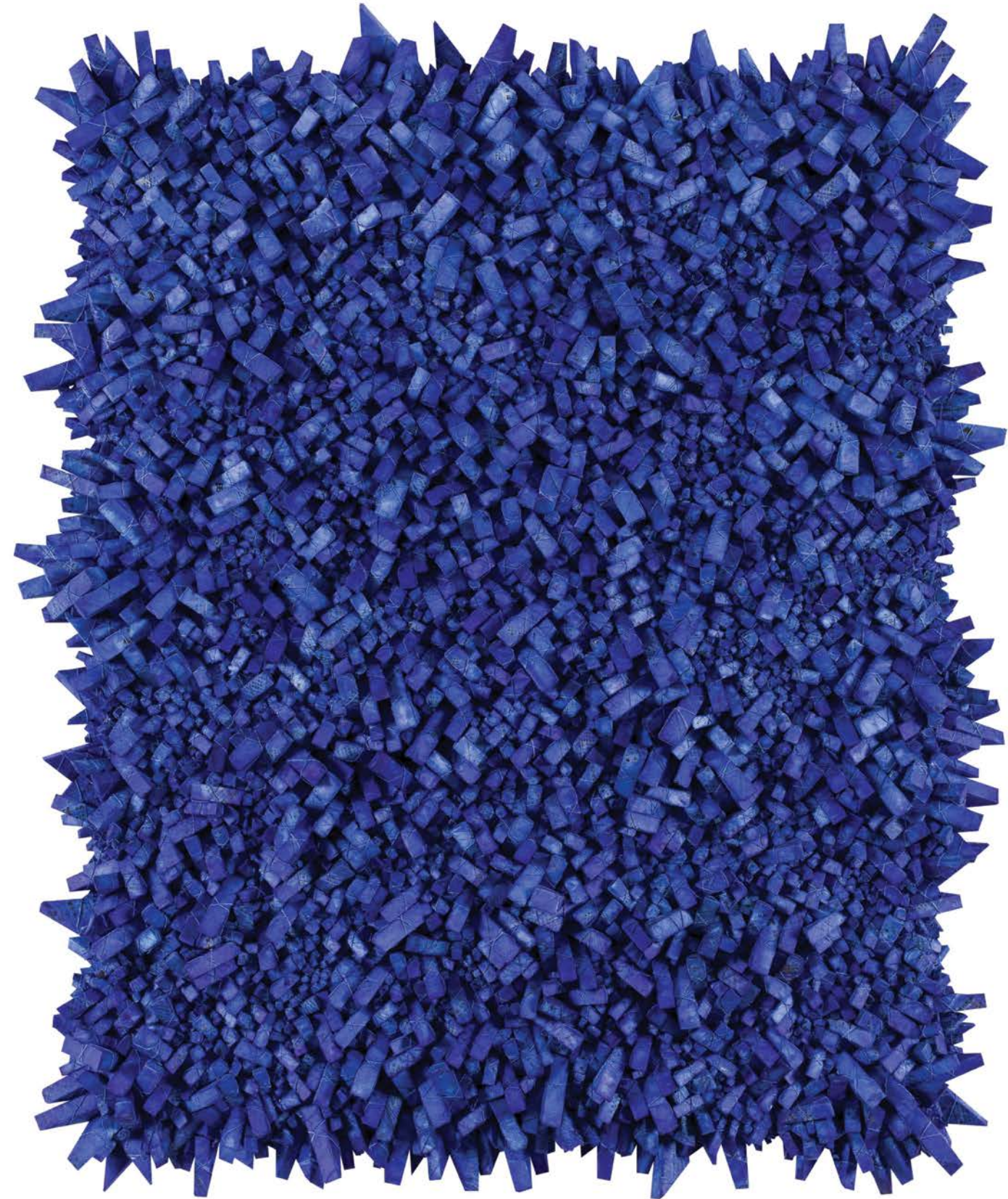


Aggregation 13-OC044, 2013
Mixed media with Korean mulberry paper
185 x 155 cm (72 7/8 x 61 in.)



Aggregation 15-MA013, 2015
Mixed media with Korean mulberry paper
180 x 150 cm (70 7/8 x 59 in.)



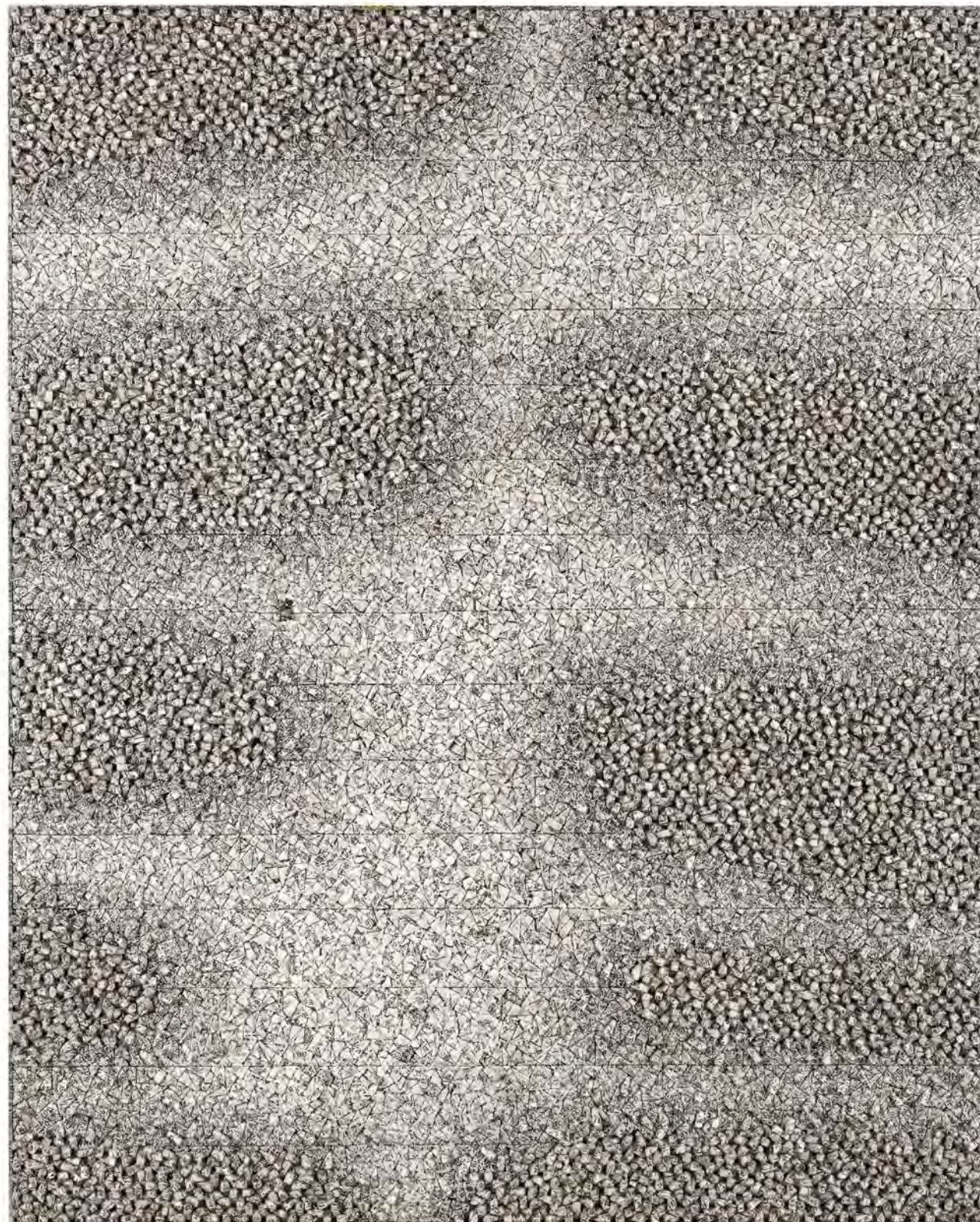


Aggregation 15-JL037, 2015
Mixed media with Korean mulberry paper
188 x 158 cm (74 x 62 3/4 in.)



Aggregation 15-OC063, 2015
Mixed media with Korean mulberry paper
163 x 131 cm (64 1/8 x 51 5/8 in.)

Aggregation 15-OC062, 2015
Mixed media with Korean mulberry paper
163 x 131 cm (64 1/8 x 51 5/8 in.)



CHUN KWANG YOUNG

1944 Born in Hongchun, Korea
1968 Bachelor of Fine Arts, Hongik University, Korea
1971 Master in Fine Arts, Philadelphia College of Art, Philadelphia, PA, USA
Present Lives and works in Seoul, Korea

Selected Solo Exhibitions

2016 Woo Yang Museum, Gyeongju, Korea
Bernard Jacobson Gallery, London, UK
2015 Pearl Lam Galleries, Singapore
Beck & Eggeling Gallery, Dusseldorf, Germany
Dovecot Studio Edinburgh (Festival), Edinburgh, UK
2014 Hasted Kraeutler Gallery, New York, USA
Bernard Jacobson Gallery, London, UK
2013 Art Plural Gallery, Singapore
Museum of Seoul National University, Seoul, Korea
2012 Hasted Kraeutler Gallery, New York, USA
Asian Art & Culture Center at Towson University, Maryland, USA
Daura Gallery at Lynchburg College, Virginia, USA
2011 Knoxville Museum of Art, Tennessee, USA
Gallery Hyundai, Seoul, Korea
Conny Dietzschold Gallery, Sydney, Australia
2009 Singapore Tyler Print Institute, Singapore
Mori Arts Center Gallery, Tokyo, Japan
University of Wyoming Art Museum, Laramie, Wyoming, USA
2008 Robert Miller Gallery, New York, USA
The Aldrich Contemporary Art Museum, Ridgefield, Connecticut, USA
2006 Kim Foster Gallery, New York, USA
Annely Juda Fine Art, London, UK
Singapore Tyler Print Institute, Singapore
Michelle Rosenfeld Gallery, New York, USA
2005 Kukje Gallery, Seoul, Korea
2004 Kim Foster Gallery, New York, USA
Michelle Rosenfeld Gallery, New York, USA
2003 Newcontemporaries, Sydney, Australia
Conny Dietzschold Gallery, Sydney, Australia
2002 Kukje Gallery, Seoul, Korea
Michell Rosenfield Gallery, New York, USA
Kim Foster Gallery, New York, USA
Columbus Museum, Georgia, USA
2001 Artist of the Year, The National Museum of Contemporary Art, Gwacheon, Korea
2000 Kim Foster Gallery, New York, USA
Commenoz Gallery, Key Biscayne, Florida, USA
Michelle Rosenfeld Gallery, New York, USA

1999 Park Ryu-Sook Gallery, Seoul, Korea
Kim Foster Gallery, New York, USA
1998 Gallery SiKong, Taegu, Korea
1997 Gallery Bhak, Seoul, Korea
1995 Gallery Bhak, Seoul, Korea
1994 Jong Ro Gallery, Seoul, Korea
1992 Gallery Hyundai, Seoul, Korea
1990 Gallery Dong Sung Arts Center, Seoul, Korea
1989 Gallery Yoon, Seoul, Korea
1988 Gallery Hyundai, Seoul, Korea
1987 Kwan Hoon Gallery, Seoul, Korea
1986 Sirota Gallery, Tokyo, Japan
1985 Kamakura Gallery, Tokyo, Japan
1984 Kwan Hoon Gallery, Seoul, Korea
Muramatsu Gallery, Tokyo, Japan
1980 American Cultural Center Gallery, Seoul, Korea
1979 Lotus Gallery, New York, USA
Malta National Museum, Saint Julian, Malta
Shin Sea Gea Gallery, Seoul, Korea
1977 Fifth St. Gallery, Wilmington, DE, USA
1976 Fifth St. Gallery, Wilmington, DE, USA
Fine Art Center, Seoul, Korea
1975 Lotus Gallery, New York, USA
1971 International House Gallery, Philadelphia, USA
1968 Seoul Cultural Center Gallery, Seoul, Korea

Selected Group Exhibitions

2015 Venice Biennale, Palazzo Grimani Art Museum, Venice, Italy
Museum SAN, Wonju, Korea
Spalding house : LESS = MORE, Honolulu Museum of Art, Hawaii, USA
2014 *Odd Volumes: Book Art from the Allan Chasanoff Collection*, Yale University Art Gallery, New Haven, Connecticut, USA
2013 *The Moment, We Awe—Contemporary Art from Korea*, How Art Museum, Wenzhou, China
2012 *Design Futurology*, Museum of Art Seoul National University, Seoul, Korea
Museum KUNSTWERK—Sammlung Alison und Peter W. Klein, Eberdingen, Germany
2011 Impressions Art Gallery, Taipei, Taiwan
2010 *I Am the Cosmos*, New Jersey State Museum, Trenton, New Jersey, USA
Aldrich Undercover 2010, The Aldrich Contemporary Art Museum, Ridgefield, Connecticut, USA
2009 Landau Fine Art, Montreal, Canada
2008 *Midnight Full of Stars*, Visual Arts Center of New Jersey, Summit, New Jersey, USA
Undercover Project, The Aldrich Contemporary Art Museum, Ridgefield, Connecticut, USA
2007 *Addicted to Paper*, Gallery Lelong, Zurich, Switzerland
2006 Holland Paper Biennial, CODA Museum, Apeldoorn, The Netherlands

2005 *2005 Seoul Art Exhibition*, Seoul Museum of Art, Seoul, Korea
 2004 Commemorative Exhibition of South Branch opening, Seoul Museum of Art, Seoul, Korea
 2003 *Crossings 2003, Korea/Hawaii*, The Contemporary Museum, Honolulu, Hawaii, USA
Art Unlimited, Art 34 Basel, Basel, Switzerland
 2001 *Compelled*, Hunterdon Art Museum, Clinton, New Jersey, USA
 1999 Galerie Die Weisse, Cologne, Germany
 1998 Galerie Dorothea van Der Koelen, Mainz, Germany
Crossing Boundaries, Gallery V, Columbus, Ohio, USA
 1997 *Korean Paper Artist*, Walker Hill Museum, Seoul, Korea
 1995 L.A. International Biennale Invitation, Bhak-Remba Gallery, Los Angeles, California, USA
Exhibition of Paper—Korean and Japanese Contemporary Artists, Chong Ro Gallery, Seoul, Korea
 Seoul International Art Festival, National Museum of Contemporary Art, Gwacheon, Korea
 1993 Asian Art Biennale Bangladesh Shilpakala Academy, Dhaka, Bangladesh
 1986 Yokohama Contemporary Artists Exhibition, The Museum of Yokohama, Yokohama, Japan
 1985 *ISPPA*, Walker Hill Museum, Seoul, Korea
 1984 *84 ISPPA-HHUKUOKA*, The Museum of Fukuoka, Fukuoka, Japan
 1982 *Ecole de Seoul*, The National Museum of Modern Art, Gwacheon, Korea
 1977 Invitational Exhibition 2 of Contemporary Artists, Fifth St. Gallery, Wilmington, Delaware, USA
 1976 Invitational Exhibition of Contemporary Artists, University of Delaware Museum, Newark, Delaware, USA
 1975 Invitational Exhibition of Contemporary Artists, Baulchie Institute Museum, Philadelphia, Pennsylvania, USA
 1974 William Penn Memorial Museum, Harrisburg, Pennsylvania, USA
 1973 *The 24th Cheltenham Art Exhibition*, Cheltenham Art Center, Cheltenham, UK
 Drexel University Museum, Philadelphia, Pennsylvania, USA
 1971–8 Civic Center Museum, Philadelphia, Pennsylvania, USA
 1966–8 *Earth Art Modern II Art Exhibition*, Philadelphia Civic Center Museum, Pennsylvania, USA
 1966–7 *National Forum of Professional Artists Show*, Civic Center Museum, Philadelphia, Pennsylvania, USA
 Korean Contemporary Artists Invitational Exhibition, The Chosun Il-Bo Press Group, Seoul, Korea
The Shin Sang Group Show, National Museum of Modern Art, Gwacheon, Korea

Selected Public Collections

Busan Metropolitan Art Museum, Busan, Korea
 Chase Manhattan Bank, New York, USA
 Chosun Hotel, Gyeongju, Korea
 Codina Group Inc. Coral Gables, Florida, USA
 Continental-Bentall L. L.C., Bellevue, Washington, D.C., USA
 Dong Yang Tinplate Corp. Seoul, Korea
 Fidelity Investments Boston, Boston, USA
 Han Wha Corp., Seoul, Korea
 Hansol Foundation of Culture, Seoul, Korea
 Hotel Shilla, Seoul, Korea
 How Art Museum, Wenzhou, China
 Il Shin Spinning Co., Seoul, Korea
 International Finance Corp., Washington, D.C., USA
 Jackson Consulting Corp., Coral Gables, Florida, USA
 Lake Hills Country Club, Suwon, Korea

Lattanzio E Associati SRL, Milan, Italy
 LG Group, Seoul, Korea
 Malta National Museum, Saint Julian, Malta
 Museum KUNSTWERK—Sammlung Alison und Peter W. Klein, Eberdingen, Germany
 National Gallery of Australia at Canberra, Canberra, Australia
 National Museum of Contemporary Art, Gwacheon, Korea
 Neiman Marcus Department Store, Dallas, Texas, USA
 Oracle Corporation, New York, USA
 Pak Young Sa Publishing Co, Seoul, Korea
 Philadelphia Society Building, Philadelphia, Pennsylvania, USA
 Potash Corporation-USA Headquarters, Chicago, Illinois, USA
 Rockefeller Foundation, New York, USA
 Rosewood Stone Group, Mill Valley, California, USA
 Sa Jo Corp, Seoul, Korea
 Sea Ah Group, Seoul, Korea
 Seo Heung Metal Co., Seoul, Korea
 Seo Won Valley Country Club Song-Chou, Korea
 Seoul 63 Building, Seoul, Korea
 Seoul Museum of Art, Seoul, Korea
 Syn Key Group, Seoul, Korea
 The Leeum, Samsung Museum, Seoul, Korea
 The Museum of Hongik University, Seoul, Korea
 The National Military Academy, Seoul, Korea
 The Seoul National University Museum of Art, Seoul, Korea
 Tita and Gene Zeffren, Chicago, Illinois, USA
 United Nations headquarters, New York, USA
 University of Virginia Art Museum Charlottesville, Virginia, USA
 Victoria & Albert Museum, London, UK
 Woodrow Wilson International Center, Washington, D.C., USA
 Woong-Jin Group, Seoul, Korea
 Yale University Art Gallery, New Haven, Connecticut, USA
 Yu Yu Ind. Ltd., Seoul, Korea

Awards

2009 Presidential Prize, the 41st Korean Culture and Art Prize, the Ministry of Culture, Sports and Tourism, Seoul, Korea
 2001 Chun Kwang Young; Artist of the Year 2001, National Museum of Contemporary Art, Gwacheon, Korea
 1974 Silver Prize, the 27th Cheltenham Art Center Exhibition sponsored by Cheltenham Art Center
 1973 Special Prize, Earth Art II sponsored by Civic Center Museum, Philadelphia, Pennsylvania, USA
 1969 Special Prize, the 18th Korean National Arts Exhibition sponsored by the Korean Culture and Arts Foundation, Seoul, Korea
 1967 Korean Contemporary Artists Invitational Exhibition Special Prize, held by Chosun Press Group, National Museum of Modern Art, Gwacheon, Korea
 1967–66 Special Prize, the 5th and 6th Shin Sang Group Exhibition, held by Shin Sang Group, National Museum of Modern Art, Gwacheon, Korea

PearlLam Galleries

Hong Kong 601-605, 6/F, Pedder Building, 12 Pedder Street, Central, Hong Kong, tel (852) 2522 1428
HK SOHO No. 1, G/F & 1/F, SOHO 189, 189 Queen's Road West, Sheung Wan, Hong Kong, tel (852) 2857 1328
Shanghai 181 Middle Jiangxi Road, G/F, Shanghai, China 200002, tel (8621) 6323 1989
Singapore 9 Lock Road, #03-22, Gillman Barracks, Singapore 108937, tel (65) 6570 2284

