

PearlLam Galleries

THE ARMORY SHOW 2018

Piers 92 & 94, 711 12th Avenue at 55th Street, New York City, USA

Stand 506, Pier 94

SU XIAOBAI

Su Xiaobai, one of China's most distinctive painters, was born in 1949 in Wuhan, Hubei province, China. In 1965, he joined the School of Arts and Crafts in Wuhan, and from 1985 to 1987, he studied oil painting at the Central Academy of Fine Arts in Beijing. In 1987, he moved to Germany to pursue his postgraduate studies at the Kunstakademie Düsseldorf (Düsseldorf State Arts Academy), returning to China in 2003. He currently lives and works between Shanghai and Düsseldorf.

Before moving to Germany in 1987, Su's work inclined towards social realism. However, first-hand experience of avant-garde Western art radically affected his outlook. During the 1990s, his work became progressively less figurative, and following his return to China in 2003, it has increasingly focused on the essential characteristics of color, shape, and surface. Having eliminated recognizable subject matter and imagery, Su's arresting and compelling art engages both with the language of Western abstract art and also with the traditions of Chinese philosophy including the Buddhist Sutra: "Everything is nothing, nothing is everything".

Su Xiaobai has developed a sensuous yet rigorous art that defies classification, and yet whose own chosen medium, lacquer, is steeped in Chinese history. Su's works are both hedonistic and mystical, defiantly sculptural while exquisitely painted. Ranging from shell-like finishes to sensuous, curved profiles and abraded textures, they exist entirely on their own terms, possessing their own history, character, and independent existence. Rather than depict other objects, his art engages with the idea of being itself. At its center, Su's work uses the visual language and context of art to embody issues that are both philosophical and, at an everyday human level, universal.

Solo exhibitions include *Su Xiaobai 2012–2014* (2016), Tina Keng Gallery, Taipei, Taiwan; *Su Xiaobai: Painting and Being* (2014), Pearl Lam Galleries, Hong Kong, China; *Grand Immensity: The Art of Su Xiaobai* (2013), National Taiwan Museum of Fine Arts, Taichung, Taiwan; *Su Xiaobai* (2013), Pearl Lam Galleries, Hong Kong, China; *The Dynasty of Colours* (2009), Langen Art Gallery, Neuss, Germany; *Kao Gong Ji—Su Xiaobai Solo Exhibition* (2008), Today Art Museum, Beijing, China; and *Great Form is Shapeless, Su Xiaobai Solo Exhibition* (2007), Shanghai Art Museum, Shanghai, China. Group exhibitions include *The World is Yours, as Well as Ours* (2016), White Cube, Mason's Yard, London, UK; *Jing Shen: The Act of Painting in Contemporary China* (2015), PAC Milan Museum of Contemporary Art, Italy; *Perfection by Chance—A Yi Pai Series Exhibition* (2015), Pearl Lam Galleries, Hong Kong, China; *Where Does It All Begin? Contemporary Abstract Art in Asia and the West* (2014), Pearl Lam Galleries, Singapore; *Chinese Contemporary Abstract: 1980s until Present: MINDMAP* (2012), Pearl Lam Galleries, Hong Kong, China; and *Yi Pai: Thirty Years of Chinese Abstraction* (2008), Beijing, China and Madrid, Spain.



SU XIAOBAI b. 1949, **Birth 2**, 2017, Oil, lacquer, linen, and wood, 190 x 180 x 18 cm (74 3/4 x 70 7/8 x 7 1/8 in.)



SU XIAOBAI b. 1949, **Crimson**, 2017, Oil, lacquer, linen, and wood, 164 x 155 x 18 cm (64 5/8 x 61 x 7 1/8 in.)



SU XIAOBAI b. 1949, **Elegant**, 2017, Oil, lacquer, linen, and wood, 178 x 170 x 17 cm (70 1/8 x 66 7/8 x 6 3/4 in.)



SU XIAOBAI b. 1949, **Clear**, 2017, Oil, lacquer, linen, and wood, 130 x 120 x 17 cm (51 1/8 x 47 1/4 x 6 3/4 in.)



SU XIAOBAI b. 1949, **Chinese Green**, 2017, Oil, lacquer, linen, and wood, 153 x 146 x 16 cm (60 1/4 x 57 1/2 x 6 1/4 in.)



SU XIAOBAI b. 1949, **Coal as Ink**, 2017, Oil, lacquer, linen, and wood, 170 x 162 x 15 cm (66 7/8 x 63 3/4 x 5 7/8 in.)



SU XIAOBAI b. 1949, **Big Tile 7**, 2015, Oil, lacquer, linen, and wood, 78 x 69 x 10 cm (30 3/4 x 27 1/8 x 4 in.)



SU XIAOBAI b. 1949, **Big Tile 8**, 2015, Oil, lacquer, linen, and wood, 76 x 70 x 10 cm (29 7/8 x 27 1/2 x 4 in.)



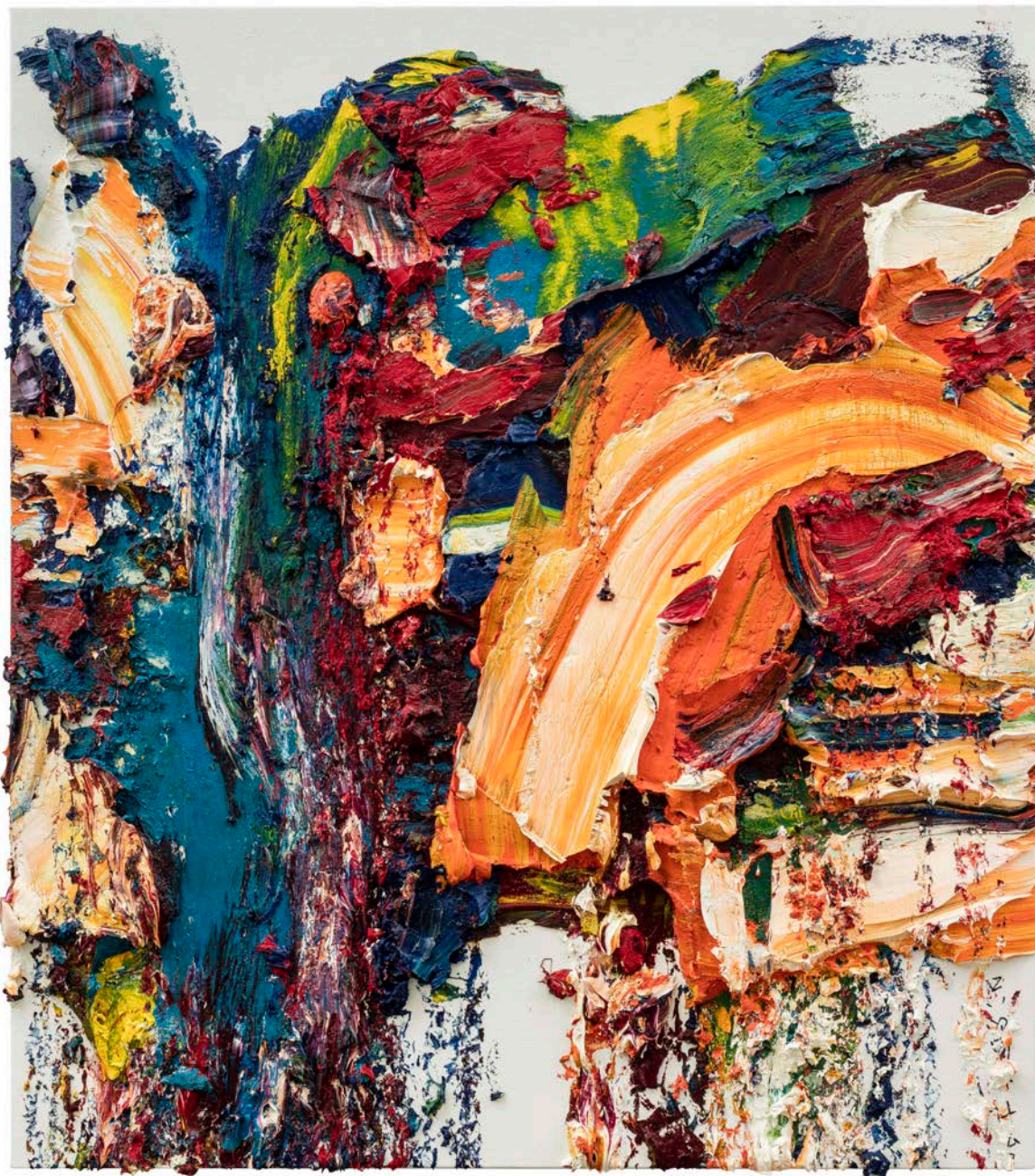
SU XIAOBAI b. 1949, **Big Tile 9**, 2015, Oil, lacquer, linen, and wood, 78 x 69 x 10 cm (30 3/4 x 27 1/8 x 4 in.)

ZHU JINSHI

Zhu Jinshi, born in 1954, is a pioneer of Chinese abstract art and installation art. He began to create abstract paintings in the early 1980s and moved to Berlin in 1986. Since then, he has been experimenting with performance, installation, and conceptual art. In 1994, Zhu returned to China, dividing his time between Berlin and Beijing until 2010. At present, he lives and works in Beijing.

Zhu Jinshi's artworks place emphasis on fluidity, where various creative processes interweave with different styles. His striking installation artworks are simple and unaffected. The materials he chooses are mostly from daily life and working environments: linen, rice paper, wood, iron plates, soy sauce, tea pots, bamboo, bicycles, light bulbs, paints, etc. However, he never imposes the concept of the readymade on these objects; rather, through linking these artworks to a specific time and space, he bestows on them a spontaneous and original beauty.

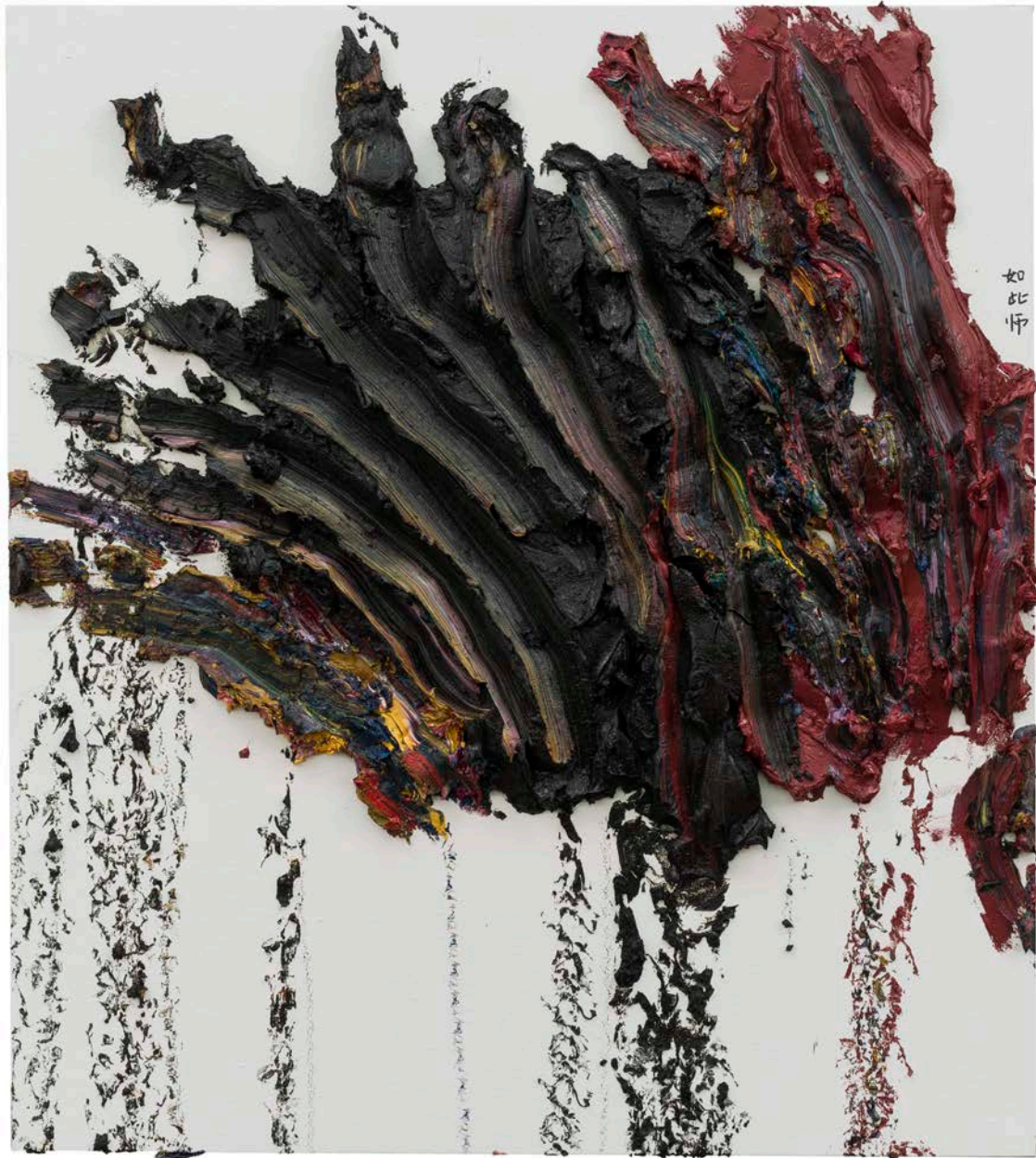
Zhu's solo exhibitions include *Ganjiakou* (2018), Pearl Lam Galleries, Shanghai, China; *Detached from Colour* (2016), Pearl Lam Galleries, Hong Kong, China; *Zhu Jinshi* (2016), Yuan Art Museum, Beijing, China; *Zhu Jinshi* (2016), Blum & Poe, New York, New York, USA; *Performance in Paint: Zhu Jinshi* (2015–16), Inside-Out Art Museum, Beijing, China; *Zhu Jinshi: Boat*, a Yi Pai installation (2015), organized by Pearl Lam Galleries and Hongkong Land at Exchange Square, Hong Kong, China; *Zhu Jinshi: Simplicity* (2014), Pearl Lam Galleries, Singapore; *Zhu Jinshi: The Reality of Paint* (2013), Pearl Lam Galleries, Hong Kong; and *Zhu Jinshi* (2012), Blum & Poe, Los Angeles, USA. Group shows include *Black* (2016), Blum & Poe, Los Angeles, California, USA; *Perfection by Chance—A Yi Pai Series Exhibition* (2015), Pearl Lam Galleries, Hong Kong, China; *Thick Paint: Jean Fautrier, Franz West, Zhu Jinshi* (2014), Luxembourg & Dayan Gallery, New York, USA; *28 Chinese* (2013–14), The Rubell Family Collection, Miami, USA; *Orient/Ation*, 4th International Istanbul Biennial in Turkey (1995), Istanbul, Turkey; *Fang* (1990), DAAD gallery, Berlin, Germany; and the *1st Xing Xing (Stars Group)* Exhibition (1979), Gallery in Beihai Park, Beijing, China. Zhu Jinshi's works have been collected internationally by notable public and private collections.



ZHU JINSHI b. 1954, *All That Remains*, 2016, Oil on canvas, 180 x 160 cm (70 7/8 x 63 in.)



ZHU JINSHI b. 1954, *Nothing but the Central Plain*, 2015, Oil on canvas, 180 x 160 cm (70 7/8 x 63 in.)



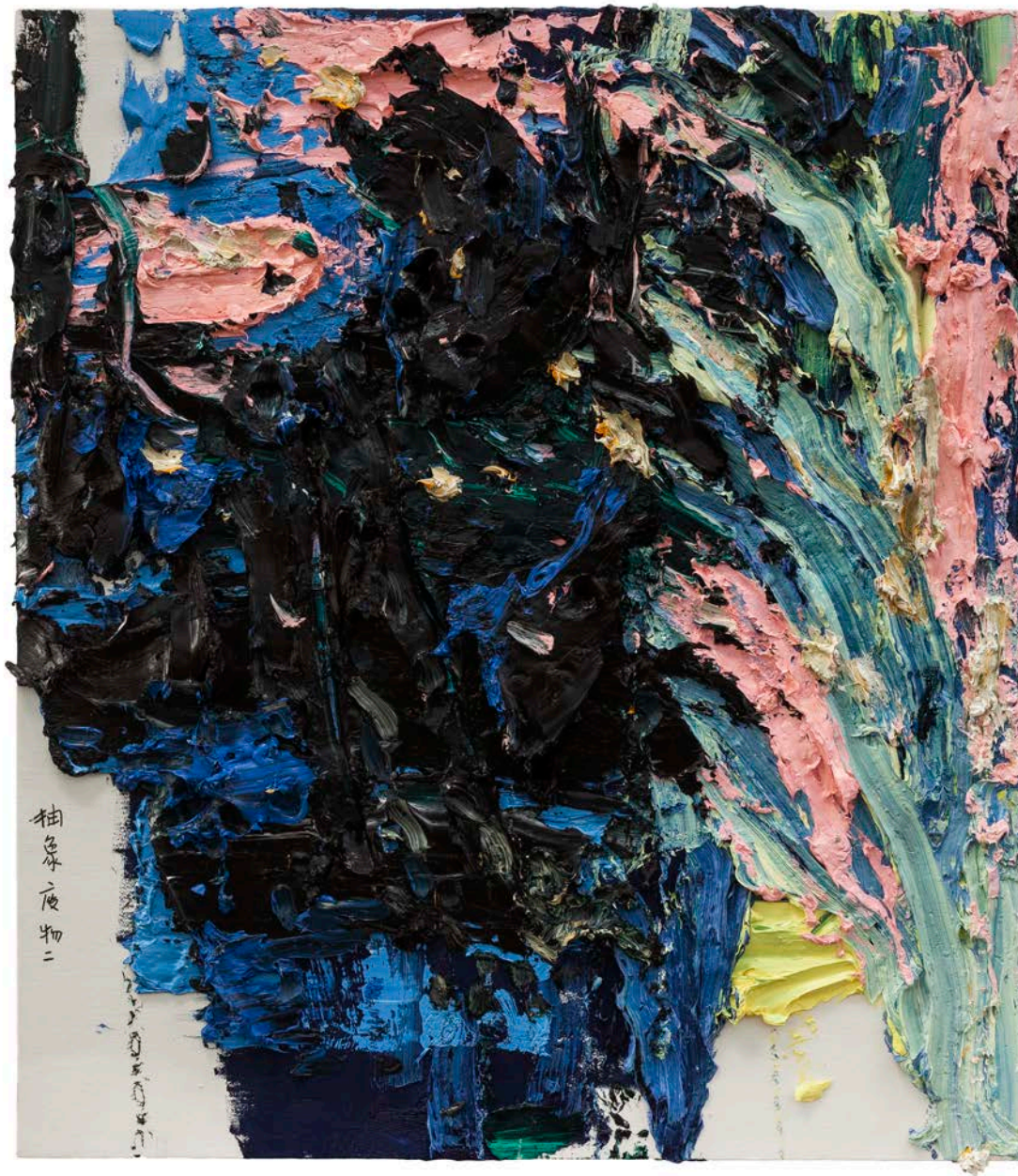
ZHU JINSHI b. 1954, **Such a Master**, 2015, Oil on canvas, 180 x 160 cm (70 7/8 x 63 in.)



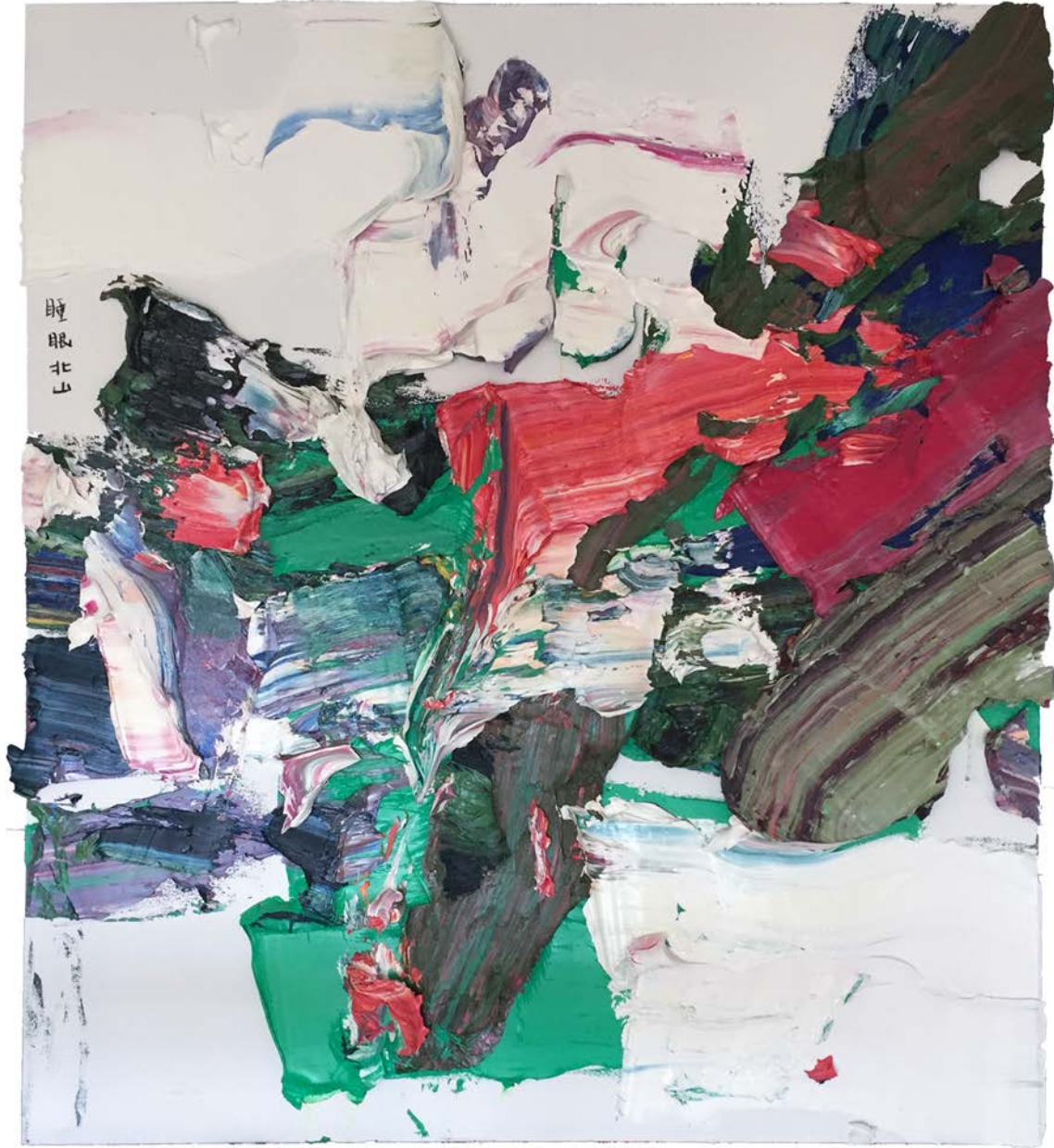
ZHU JINSHI b. 1954, **Black Screen**, 2015, Oil on canvas, 160 x 140 cm x 2 (63 x 55 1/8 in. x 2)



ZHU JINSHI b. 1954, **Abstract Rubbish 1**, 2014, Oil on canvas, 160 x 140 cm (63 x 55 1/8 in.)



ZHU JINSHI b. 1954, *Abstract Rubbish 2*, 2014, Oil on canvas, 160 x 140 cm (63 x 55 1/8 in.)



ZHU JINSHI b. 1954, *Sleeping with Hill to the North*, 2017, Oil on canvas, 180 x 160 cm (70 7/8 x 63 in.)



ZHU JINSHI b. 1954, Mistaken Dream of the Lotus Pond, 2014, Oil on canvas, 180 x 160 cm x 3 (70 7/8 x 63 in. x 3)



ZHU JINSHI b. 1954, *Wall of Nine Dragons 1, 2 3*, 2011, Oil on canvas, 50 x 60 cm x 3 (19 5/8 x 23 5/8 in. x 3)

Pearl Lam Galleries 藝術門

Hong Kong 香港

HK H Queen's 香港 H Queen's

Shanghai 上海

Singapore 新加坡

601-605,6/F, Pedder Building, 12 Pedder Street, Central, Hong Kong, tel (852) 2522 1428 香港中環畢打街 12 號畢打行 6 樓 601—605 室

9/F, H Queen's 80 Queen's Road Central, Central, Hong Kong, tel (852) 2857 1328 香港中環皇后大道中 80 號 H Queen's 9 樓

181 Middle Jiangxi Road, G/F, Shanghai, China 200002, tel (8621) 6323 1989 中國上海市江西中路 181 號 郵編 200002

9 Lock Road, #03-22, Gillman Barracks, Singapore 108937, tel (65) 6570 2284 新加坡登普西山

15 Dempsey Road #01-08, Dempsey Hill, Singapore 249675, tel (65) 6570 2284 新加坡吉門營房藝術區