

# PearlLam Galleries

## Pearl Lam Galleries to debut at Art Basel Miami Beach 2024

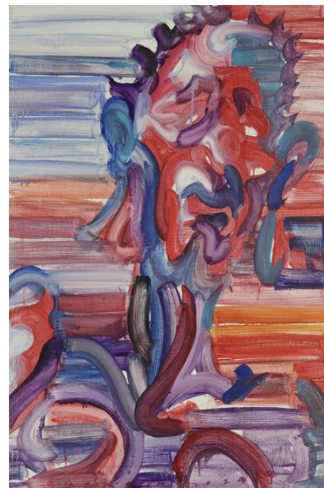
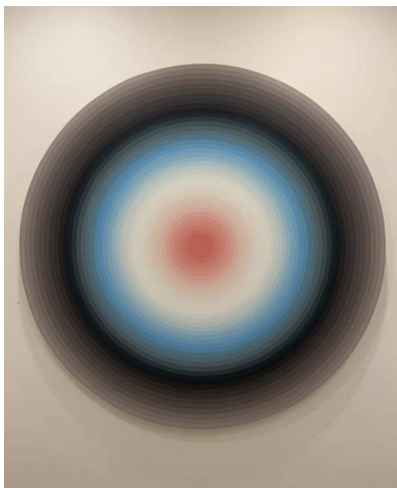
Stand D21

VIP First Choice  
VIP Preview

Vernissage  
Public Hours

Venue

Wednesday, 4 December, 11am–7pm  
Wednesday, 4 December, 4–7pm  
Thursday, 5 December, 11am–7pm  
Thursday, 5 December, 4–7pm  
Friday, 6 December, 11am–6pm  
Saturday, 7 December, 11am–6pm  
Sunday, 8 December, 11am–6pm  
Miami Beach Convention Center, 1901 Convention Center Drive  
Miami Beach, FL 33139



L–R: YAN LEI b. 1965, China, **Colour Wheel**, 2022, Acrylic on canvas, dia. 150 cm (59 in.)

ZHU JINSHI b. 1954, China, **Light Amber Mist**, 2024, Acrylic on canvas, 100 x 80 cm (39 3/8 x 31 1/2 in.)

ETSU EGAMI b. 1994, Japan, **Rainbow**, 2024, Oil on canvas, 88 x 59.5 cm (34 5/8 x 23 3/8 in.)

Miami—Pearl Lam Galleries is pleased to announce its inaugural participation at Art Basel Miami Beach 2024 from 4–8 December with a dynamic group exhibition set to bring Asian voices to the forefront of the art fair. Uniting Eastern and Western perspectives, the presentation reflects the gallery's commitment to bridging contemporary Asian art with new audiences and establishing deeper connections between the East and West.

Challenging traditional, Western-centric narratives, the curation will see a collection of abstract works by the gallery's Asian artist roster including Etsu Egami, Su Xiaobai, Yan Lei, Zhu Jinshi, Zhu Peihong, and many more. From Egami's expressive brushstrokes to Su Xiaobai's defiantly sculptural while

exquisitely painted artwork, Pearl Lam Galleries will reveal the varied ways in which each artist pushes the boundaries of abstraction while drawing on personal, historical, and philosophical themes.

Among the artists, Su Xiaobai's chosen medium of lacquer is steeped in Chinese history. His works are both hedonistic and mystical, ranging from shell-like finishes to sensuous, curved profiles and abraded textures. Etsu Egami's fluid brushstrokes investigate the complexities of miscommunication and language, while Yan Lei's work deconstructs visual imagery from Chinese and Western popular culture to challenge the power structures of the art system. Zhu Peihong, who pioneered the concept of 'pictorial sculpture', expands the language of abstract painting with virtual reality technology.

The gallery's debut at the fair features a noteworthy contribution to the Meridians sector, which was introduced at Art Basel Miami Beach in 2019. This area is dedicated to large-scale works and includes a significant installation by Zhu Jinshi, a pioneer in impasto abstract painting and Xuan paper installations with over forty years of artistic practice. Titled *Pathway*, the piece consists of three intersecting semi-circular Xuan paper structures mounted on steel frames, creating a vast matrix for visitors to navigate. This work reflects on the current fractured state of the world, emphasising its disjointed nature while exploring the connections between tradition, nature, and reality through the poetic use of rice paper, cotton thread, and fine bamboo.

"Eastern philosophy highlights the importance of unity, as symbolised by a full circle, in keeping peace and order in the world. As Mencius wisely stated, 'Without rules, there can be no square or circle, and without benevolence, the world cannot be governed peacefully.' The full circle has long been missing in today's world, with social order being repeatedly disrupted and conflicts gradually expanding from regional issues to global crises. Viewers are invited to contemplate their own feelings about walking through an un-unified pathway," says Jinshi.



ZHU JINSHI b. 1954, China, **Sleeping with Hill to the North**, 2017, Oil on canvas, 180 x 160 cm (70 7/8 x 63 in.)

"Art Basel Miami Beach is a milestone for us, and we are thrilled to debut at one of the world's most influential art fairs outside of Hong Kong," says Pearl Lam, founder of Pearl Lam Galleries. "Our presentation reflects our mission to bridge different artistic traditions and promote cross-cultural exchange through the power of contemporary art. We are honoured to bring this group of artists to Art

Basel Miami Beach. Their works offer profound insights into abstraction and represent the gallery's broader ambition to spotlight artists whose work navigates cultural identities and transnational experiences."

In addition to the gallery's main booth presentation, Pearl Lam Galleries will feature an exclusive viewing room showcasing works by internationally recognised artists Mr Doodle, Michal Korman, and Damian Elwes, further elevating the gallery's diverse representation of artistic voices across different mediums and styles.





## About Pearl Lam Galleries

Pearl Lam Galleries is a driving force within Asia's contemporary art scene. Founded in 2005, the gallery plays a vital role in stimulating international dialogue and cross-cultural exchange between the East and West.

Following a rigorous programme, Pearl Lam Galleries presents museum-quality exhibitions that reevaluate and challenge perceptions of cultural practice in Asia. With a thoughtfully balanced roster of Chinese and international artists, the gallery is strategic in its curation, positioning itself as an educator.

The gallery maintains spaces in Hong Kong and Shanghai. With a team of international staff, Pearl Lam Galleries' reach is global, having presentations at major international art fairs including Art Cologne, Art Basel, Frieze Masters, and West Bund Art and Design.

## Follow Pearl Lam Galleries

 @pearllamgalleries  
 @pearllamgalleries  
 @pearllamfineart  
 Pearl Lam Galleries

 藝術門  
 藝術門  
 藝術門畫廊 Pearl Lam Galleries  
[www.pearllam.com](http://www.pearllam.com)

---

## Press Enquiries

Asia:  
Charmaine Chan / Associate Director, PR & Marketing  
[charmaine@pearllamgalleries.com](mailto:charmaine@pearllamgalleries.com)  
+852 2522 1428

China:  
Grace Wong / PR & Digital Marketing Manager  
[PR@pearllamgalleries.com](mailto:PR@pearllamgalleries.com)  
+86 21 6323 1989

UK, USA and Rest of the World:  
Benji Prescott / Scott & Co  
[benji@scott-andco.com](mailto:benji@scott-andco.com)  
+44 (0)20 3487 0077