

PearlLam Galleries

Pearl Lam Galleries at Art Basel Hong Kong 2025

Stand 1D12

VIP First Choice
VIP Preview

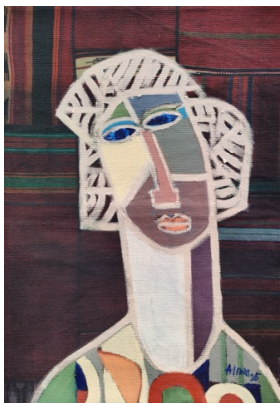
Wednesday, 26 March, 12 noon–3pm
Wednesday, 26 March, 3–8pm
Thursday, 27 March, 12 noon–4pm
Friday, 28 March, 12 noon–2pm
Saturday, 29 March, 12 noon–2pm
Sunday, 30 March, 11am–12pm

Vernissage
Public Hours

Thursday, 27 March, 4–8pm
Friday, 28 March, 2–8pm
Saturday, 29 March, 2–8pm
Sunday, 30 March, 12 noon–6pm

Venue

Hong Kong Convention and Exhibition Centre, Wan Chai, Hong Kong



L–R: ALIMI ADEWALE b. 1974, **Whispers of Tradition**, 2025, Acrylic on kilim, 150 x 104 cm (59 x 41 in.)

SU XIAOBAI b. 1949, **Floating Sand–6**, 2024, Oil and lacquer, 69 x 70 x 7 cm (27 1/8 x 27 1/2 x 2 3/4 in.)

ZHU PEIHONG b. 1987, **Growing 1515**, 2024, Acrylic on canvas, 200 x 200 cm (78 3/4 x 78 3/4 in.)

Hong Kong— Pearl Lam Galleries is pleased to announce its annual participation in Art Basel Hong Kong 2025, held from 26–30 March, with a group exhibition showcasing both established and emerging voices including Alimi Adewale (b. 1974, Nigeria), Mr Doodle (b. 1994, UK), Damian Elwes (b. 1960, UK), Maggi Hambling (b. 1945, UK), Michal Korman (b. 1987, Slovakia), Antony Micallef (b. 1975, UK), Su Xiaobai (b. 1949, China), Zhu Jinshi (b. 1954, China), and Zhu Peihong (b. 1987, China). Expanding on themes of tradition, the presentation brings together works that move fluidly between abstraction and figuration, reinterpreting historical techniques through contemporary sensibilities. The artists explore the interplay between heritage and modernity, offering new perspectives on material and form.

Anchored by the gallery's history of showcasing Chinese abstraction, with works by Su Xiaobai, Zhu Jinshi and Zhu Peihong, the stand spotlights artworks that draw deeply from the legacy of centuries-old Chinese art traditions. Through texture, materials and ink, these artists create works that feel distinctly modern while staying rooted in their cultural heritage. Coinciding with Art Basel Hong Kong, the gallery will also present *N/AO N/AO*, a solo exhibition by Su Xiaobai, one of China's most distinctive artists, from 24 March, in collaboration with the Su Xiaobai Foundation.

Su's works are a testament to the timeless allure of lacquer, a medium with roots in Neolithic China. His creations, with their textured, shell-like surfaces and gracefully curved forms, evoke a sense of indulgence and mysticism, blending a respect for history with a strikingly contemporary aesthetic. Meanwhile, Zhu Jinshi, renowned for his mastery of impasto, presents abstract works that combine physicality and movement. Over his forty-year career, Zhu Jinshi has perfected this technique, layering paint with expressive vigour to create works that resonate with both energy and depth. Zhu Peihong, a pioneer in "pictorial sculpture", offers a cutting-edge perspective by integrating virtual reality technology into his abstract works.

This dialogue extends to Nigerian artist Alimi Adewale, who blends abstraction and minimalism to explore the impact of urbanisation and modern life. His work, rich in texture and materiality, engages with the dynamism of cities while drawing from African traditions to create a distinct and contemporary narrative.

The bold, experimental creations of British artists Mr Doodle, Damian Elwes, Maggi Hambling and Antony Micallef offer an energetic contrast. Mr Doodle invites viewers into his imaginative world through his playful, immersive visual language, while Elwes enchants with his meticulously researched and vibrantly detailed depictions of artist studios in painting and mixed media. Maggi Hambling is a celebrated contemporary painter and sculptor whose work continues to challenge and seduce. Hambling's celebrated *Wall of Water* series have been exhibited at the National Gallery, London; The Hermitage, St Peterburg, Russia; and CAFA, Beijing. Micallef, a modern expressionist, roots his work in social commentary and self-examination. Known for visually charged figure paintings, he pushes the boundaries of oil paint, using impasto and layering techniques to blur the lines between painting and sculpture.

Paris-based Slovakian artist Michal Korman, influenced by Japanese aesthetics and the tradition of European oil painting, presents works that reflect on time, memory, and collected objects.



L–R: MICHAL KORMAN b. 1987, *In a Mediterranean Garden*, 2024, Oil on canvas, 120 x 120 cm (47 1/4 x 47 1/4 in.)

DAMIAN ELWES b. 1960, *My Studio in Colombia*, 2003, Acrylic on canvas, Diptych, Each 167 x 167 cm (65 3/4 x 65 3/4 in.)

The group presentation at Art Basel Hong Kong 2025 intertwines the distinct visual languages of international artists, using abstraction as a shared medium to unravel personal and cultural narratives.

“Art Basel Hong Kong is a cornerstone event for us, and we are proud to continue our long-standing participation in one of the world’s premier art fairs,” says Pearl Lam, founder of Pearl Lam Galleries. “This year, our presentation reflects a renewed focus on Chinese abstraction, revisiting the pioneering practices of senior artists while also introducing new voices who explore abstraction and figuration in new ways. As Hong Kong’s role as a major cultural hub continues to grow, we’re pleased to see Art Basel strengthen its connection to the city’s evolving art scene. Our stand of international artists, including many of our newly represented artists, furthers this, reinforcing our mission to foster meaningful cross-cultural dialogue.”





About Pearl Lam Galleries

Pearl Lam Galleries is a driving force within Asia’s contemporary art scene. Founded in 2005, the gallery plays a vital role in stimulating international dialogue and cross-cultural exchange between the East and West.

Following a rigorous programme, Pearl Lam Galleries presents museum-quality exhibitions that re-evaluate and challenge perceptions of cultural practice in Asia. With a thoughtfully balanced roster of Chinese and international artists, the gallery is strategic in its curation, positioning itself as an educator.

The gallery maintains spaces in Hong Kong and Shanghai. With a team of international staff, Pearl Lam Galleries’ reach is global, having presentations at major international art fairs including Art Cologne, Art Basel, Frieze Masters, and West Bund Art and Design.

Follow Pearl Lam Galleries

 @pearllamgalleries
 @pearllamgalleries
 @pearllamfineart
 Pearl Lam Galleries

 艺术门
 藝術門
 藝術門画廊 Pearl Lam Galleries
www.pearllam.com

Press Enquiries

Asia:

Charmaine Chan / Associate Director, PR & Marketing
charmaine@pearllamgalleries.com
+852 2522 1428

UK, USA and Rest of the World:

Benji Prescott / Scott & Co
benji@scott-andco.com
+44 (0)20 3487 0077

Talia Williams / Scott & Co
talia@scott-andco.com
+44 (0)20 3487 0077